



EXPANDED REVENUE OPPORTUNITIES

- BLE mobile wallet connectivity
- Multi-currency acceptance
- Real-time marketing at the slot, table, or kiosk

INCREASED EFFICIENCY

- Proactive alerts for drops, e-drops, and fills
- Intelligent recommendations suggesting drop priority to certain cash box conditions
- Remote diagnostics and firmware download scheduler

ENHANCED SECURITY

- Dispute resolution with high resolution banknote/TITO images
- Serial number analysis and verification
- Suspicious activity alerts and tracking
- Secure APIs provide access to FUZION data for casino system use

CASH MANAGEMENT

- Real-time asset monitoring and tracking
- Tracking of all cash by denomination and location
- Improve cash buy accuracy with cash forecast feature



IMAGINE A WORLD where the existing devices across your gaming floor can be utilized in new ways to unlock greater value for you and your players. That is the game-changing technology called FUZION®. When you connect the FUZION system to JCM's iVIZION® or UBA® Pro bill validator and GEN5® ticket printer, every machine on your slot floor has the potential to deliver a suite of player-focused, revenue-driving features.

FUZION becomes the highway to enable new services across a gaming floor, regardless of machine manufacturer or CMS provider. Whether it's using FUZION to inform operational decisions, protect your casino, or offer new features to your players, FUZION technology is the ultimate systems solution to bring the future to your casino today.



FUZION TECHNOLOGIES: SYSTEM MODULES AND INTERFACES

FUZION®

Peripheral Management

- Real-time connection to iVIZION and GEN5
- Firmware download scheduling
- Time metrics for every event in FUZION
- AML security event monitoring
- Bill image capture with serial numbers
- Serial numbers can be authenticated per bill

iCB®

Drop and Count Management

- Intelligent electronic drop management
- Streamline drop collection process
- Increase count team efficiency
- Automated daily reports
- Intelligent recommendations with custom criteria, suggesting which boxes to give priority in the drop

PromoNet®

Promotional Couponing

- Stand-alone promotional ticketing
- Behavioral-based promotions to active players
- Influence play duration and spend
- Target carded and uncarded players

iPROMO™

3rd Party Dynamic Printing

- CMS-powered promotional ticketing
- Highly customized direct real-time marketing
- Birthday, anniversary, and special event marketing
- Customized W-2G tax forms and jackpot payout

iTITO™

Virtual TITO Transactions

- Virtual TITO technology to enable cashless transactions
- Integration with any kiosk provider
- System and machine agnostic
- No need for antiquated wagering accounts

JcmPay™

Cashless Transaction Gateway

- Secure gateway for iTITO™ and 3rd party cashless systems
- Payment transaction facilitation
- Transaction reporting and analytics
- Financial reconciliation tool



The FUZION® system provides cash management data from across the casino. Backed by data, each department can make process improvements with FUZION technology: slot management will improve BV performance with dashboard monitoring, count/drop will reduce E-drops with cashbox fullness reporting and intelligent recommendations, security and surveillance will receive AML alerts with transaction dates and times. FUZION gives you intelligence, security, and interconnected transactions like no other supplier.

FUZION TECHNOLOGIES: HARDWARE



VIZION®

Bill Validation

- Contact Image Sensor (CIS) technology
- Fastest note-to-note processing speed
- Industry's highest acceptance rate
- Dust and liquid resistant



GENS®

TITO & Coupon Printing

- Dynamic graphics printing on the fly
- Print system-generated promotions and tax forms
- Compatible with GEN2U™ harnessing
- Jam prevention technology



UBA Pro®

UNIVERSAL BILL ACCEPTOR

Bill Validation

- Fast note-to-note processing speed
- 2 or 4 way barcode reader
- Centering mechanism
- Most FUZION features supported



PNA®

Peripheral Network Adapter

Inter-device Communication

- Multiple ports: SAS, USB, Network, Serial, Card Reader
- Built-in CPU and memory allow this device to manage promotions and API interfaces

MOBILE I/O®



Mobile Transaction Enablement

- Uses Bluetooth Low Energy (BLE) supported by most mobile devices
- 2D barcode pairing is intuitive for users
- Easy installation
- Integrated for use with Pavilion Payments VIP Mobility
- FUZION Lite available for cashless only customers

HARDWARE:

FUZION Server

- CPU: 64-bit Server Grade 8+ Cores @ 3.4GHz or greater
- RAM: 64GB
- Hard Drive: 2TB or greater

FUZION Database Server

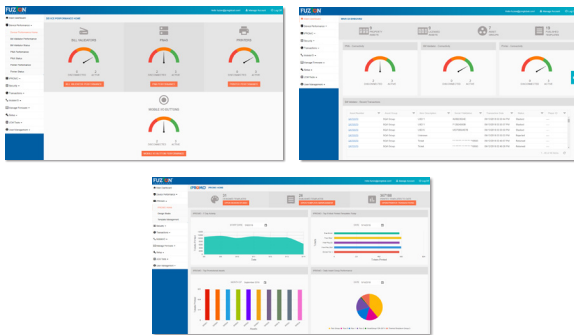
- CPU: 64-bit Server Grade 8+ Cores @ 3.4GHz or greater
- RAM: 64GB
- Hard Drive: 500GB or greater
- Network: Two Network Interfaces @ 1Gbps or greater

Network Requirements

- High speed network with at least 100 Mbps bandwidth speeds at the bank switch
- 1 Gbps or greater bandwidth between the bank switch and the FUZION server

EGM Requirements

- iVIZION or UBA Pro bill validator
- GEN5 thermal printer



Dynamic dashboards monitor cash box fullness, printer paper levels, peripheral health, and more.

SOFTWARE:

FUZION Server

- Microsoft Windows Server 2016 R2 or later
- Microsoft Internet Information Services
- Microsoft .NET Framework 4.5

FUZION Database Server

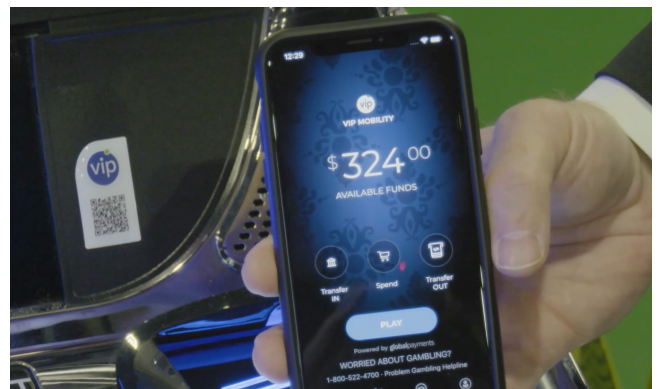
- Microsoft Windows Server 2016 R2 or later
- Microsoft SQL Server 2016 or later

FUZION Remote Access

- Any newer Operating Systems such as Windows 10/11. Latest version of Chrome/Edge/Firefox.



FUZION allows EGMs to redeem 2D barcodes through the iVIZION bill validator.



JCM's cashless partnerships give players more transaction options.

THE AMERICAS HEADQUARTERS

JCM American Corporation
925 Pilot Road
Las Vegas, NV 89119
USA

Tel: 800-683-7248
(800# for USA, Canada & Mexico)
Tel: 702-651-0000

ASIA-PACIFIC HEADQUARTERS

Japan Cash Machine Co., Ltd.
15th Floor, Mita Bellju Building
5-36-7 Shiba, Minato-ku
Tokyo 108-0014
Japan

Tel: 81-3-5962-3731

EMEA HEADQUARTERS

JCM Europe GmbH
Muendelheimer Weg 60
D-40472 Dusseldorf
Germany

Tel: 49-211-530645-0