

Transparent Glass LED Displays

- Create interactive environments that engage your audience
- Ideal for digital branding and commercial window advertising
- High transparency for maximum impact



MAXIMUM IMPACT

- High brightness for clear visibility during daylight
- High transparency to create visually open spaces with pops of light and color

VERSATILE DESIGN

- Thin design to fit any space
- LED chip integration into LED beads to guarantee high transparency and vivid color

ENVIRONMENTALLY FRIENDLY

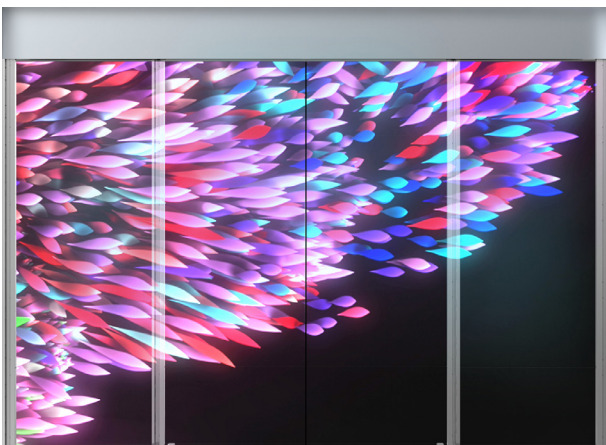
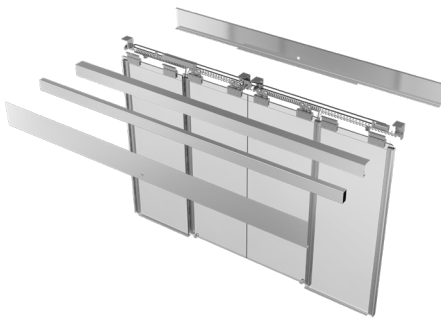
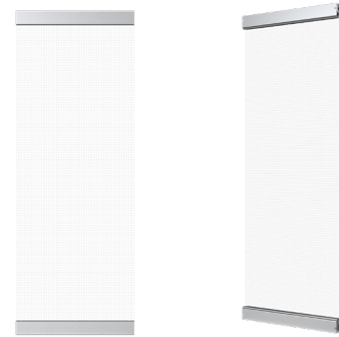
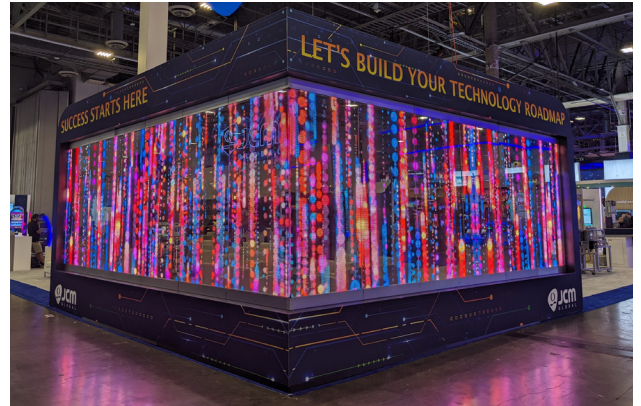
- Energy saving
- Waterproof and wind resistant
- Highly secure with multiple safeguards

The DSS CLEAR™ series deliver a unique customer experience in store, around the casino floor, and more. Designed in a variety of configurations, CLEAR features high density industrial tempered glass and integrated circuit technology to form transparent digital signage perfect for modern architecture.

EYE-CATCHING TECHNOLOGY

NSN SERIES GLASS LED WALL

The NSN Glass LED Series is a perfect solution for high-end window advertising, entertainment venues, and more. Using high-density industrial tempered glass and patented integrated-IC technology, it creates an open space while showcasing high resolution creative content. With its versatile and lightweight frame, it is ideal for various environments, including glass windows, interior and exterior partitions, landscape lighting, transportation stations, and showrooms.



NM GLASS LED SLIDING DOOR

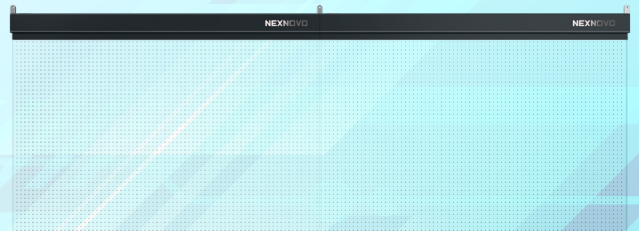
NM glass LED displays are specifically designed for creative entrances like sliding doors, forming an all-in-one solution. Frameless and high resolution, NM series turn entrances into an attention-grabbing spectacle. Its maximum transparency and brightness brilliantly display both unique and commercial content. In addition to sliding doors, they can also be used for window fronts, wall partitions, and other retail applications.

DYNAMIC DISPLAY TRANSPARENCY



NexBarrier SERIES GLASS LED HALF WALL

The NB series displays video and animation content while maintaining the transparent appearance of glass, with over 92% transparency. Whether it is giving directions or showcasing advertising messaging, it maximizes the potential of commercial public spaces. The waterproof and stable design of the NB Series protects it from the elements as well as foot traffic, making it an ideal solution for shopping malls, lounges, train and metro stations, and other public environments.



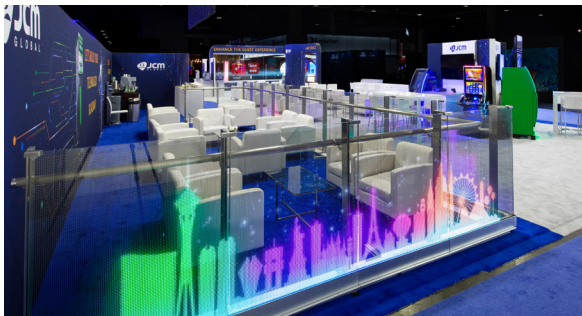
NexESign SERIES GLASS LED HANGING SIGN

NexESign is a smart high-tech product that uses patented integrated-IC technology and nano film circuits to create an ultra-transparent glass LED display. Supported by mobile phone apps, it can be remote controlled, and the content can be easily changed. The NexESign is lightweight and thin for easy installation and hanging as a wayfinding banner, retail window advertisement, and more.



CLEAR

	NSN	NM	NB	NEXESIGN
Pixel Pitch (mm)	8.3, 10.42	10.42	8.33, 10.42, 15.63, 20.84	8.33, 10.52
LED	NEX2121	NEX2020	NEX2121	NEX2121
Pixel/m ²	Custom	96 x 96 (9216)	Custom	Custom
Panel Dimensions (WxH, mm)	Custom	Custom	Custom	Custom
Panel Resolution	Custom	Custom	Custom	Custom
Max. Power (w/panel)	Custom	Custom	Custom	Custom
Brightness (cd/m ²)	2500 - 5000	3500 - 4000	2500 - 5000	4500 - 5000
Transparency	90 - 93%	92%	90 - 98%	90 - 92%
Refresh Rate (Hz)	60	60	60	60
Weight (kg/panel)	Custom	Custom	Custom	Custom
Thickness (mm)	18.04	18.04	18.04	6
IP Rating (Ingress Protection)	IP65 Outdoor	IP52 Indoor	IP65 Outdoor	Indoor
Horizontal Viewing Angle	120°	120°	120°	120°
Vertical Viewing Angle	120°	120°	120°	120°
Expected LED Lifetime	≥ 100,000 hours	≥ 100,000 hours	≥ 100,000 hours	≥ 100,000 hours
Certifications	CE, FCC, ETL, IC	Ongoing	CE, ETL, FCC, IC	CE, FCC, IC



TYPICAL APPLICATIONS

Casino	Retail Window Display	Sliding Door Entrance
Building Facade	Advertisement Media	Nightclubs
Hospitality Venue	Urban Landscaping	Convention & Exhibit Space

THE AMERICAS HEADQUARTERS

JCM American Corporation
925 Pilot Road
Las Vegas, NV 89119
USA

Tel: 800-683-7248
(800# for USA, Canada & Mexico)
Tel: 702-651-0000

ASIA-PACIFIC HEADQUARTERS

Japan Cash Machine Co., Ltd.
2-23-2 Higashi Nihonbashi,
Chuo-ku
Tokyo 103-0004
Japan

Tel: 81-3-5962-3731

EMEA HEADQUARTERS

JCM Europe GmbH
Muendelheimer Weg 60
D-40472 Dusseldorf
Germany

Tel: 49-211-530645-0