

www.jcmglobal.com

For updates on JCM Global® products, services, and events, follow JCM Global on Facebook®, LinkedIn®, Twitter™ and YouTube™



facebook.com/JCMglobal

twitter.com/jcmglobal

linkedin.com/company/jcm-global

youtube.com/jcmglobal

Parts are Parts

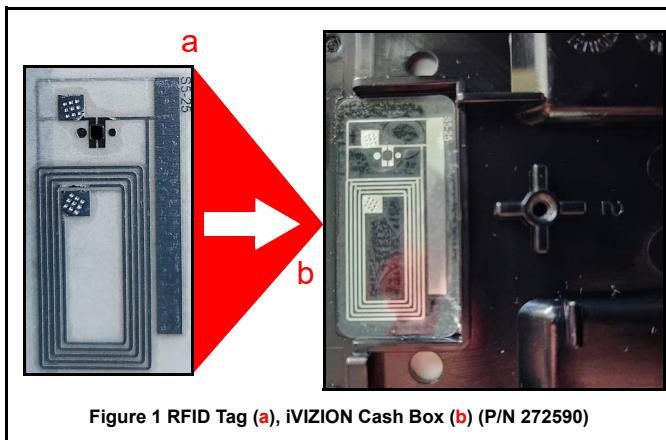


Figure 1 RFID Tag (a), iVIZION Cash Box (b) (P/N 272590)

Part No. 272590

Description: RFID Tag, iVIZION® Cash Box

Usage: The JCM iVIZION Banknote Acceptor includes Intelligent Cash Box (ICB®) System support as a standard feature. iVIZION Units use Radio Frequency Identification (RFID) to transfer ICB data from the iVIZION Transport to the RFID Tag in the iVIZION Cash Box. The RFID Tag performs as a memory chip, storing information about Banknote Acceptance and iVIZION Unit Performance.

Note: The RFID Tag (Figure 1 a) is a passive device, and is only active in close proximity to the iVIZION transmitter/receiver. The RFID Tag is extremely reliable, with expected read/write cycles averaging well over 1 billion cycles.

Latest JCM Software Listing

UNIT	Country	ID	Version	CRC	Release Date
UBA-10/11-SS	USA	ID-003	V-2.83-52	D358	01/15/20
UBA-10/11-SS	USA	ID-024	V-2.82-25	6D5B	11/19/18
UBA-14/24-SS/SU	USA	ID-003	V-2.83-40	1455	01/15/20
UBA-14/24-SS/SU	USA	ID-0G8	V-2.83-80	89B6	02/10/21
UBA-14/24-SS/SU	USA	ID-024	V-2.83-37	95B2	01/15/20
UBA-14/24-SS/SU	USA	ID-028	V-2.83-25	87B4	01/15/20
iVIZION-100 SS/SU	USA	ID-003	V-2.89-44	4532	09/16/21
iVIZION-100 SS/SU	USA	ID-008	V-2.83-22	39B4	08/03/18
iVIZION-100 SS/SU	USA	ID-024	V-2.89-15	58A1	09/16/21
iVIZION-100 SS/SU	USA	ID-028	V-2.89-33	9FE7	02/07/22
iVIZION-100 SS/SU	USA	ID-0G8	V-2.89-42	0779	08/31/21
UBA-10/11-SS	CAN	ID-003	V-2.83-52	B001	07/27/22
UBA-10/11-SS	CAN	ID-024	V-2.82-25	D9AD	09/11/18
UBA-14/24-SS/SU	CAN	ID-003	V-2.82-40	5E8C	09/11/18
UBA-14/24-SS/SU	CAN	ID-024	V-2.82-37	E2BE	09/11/18
UBA-14/24-SS/SU	CAN	ID-028	V-2.82-25	E01A	09/11/18
UBA-14/24-SS/SU	CAN	ID-0G8	V-2.83-81	10A2	08/03/22
iVIZION-100 SS/SU	CAN	ID-003	V-2.84-44	68F1	03/04/20
iVIZION-100 SS/SU	CAN	ID-024	V-2.84-15	D926	03/04/20
iVIZION-100 SS/SU	CAN	ID-028	V-2.84-31	F0A6	03/04/20
iVIZION-100 SS/SU	CAN	ID-0G8	V-2.85-41	B874	10/26/20

The Latest JCM Software Listing (shown above) identifies specific software versions that have been released to OEMs. **It is the responsibility of the OEM to obtain all required approvals from Gaming Regulators and Jurisdictional Authorities necessary for use of approved software versions.** Contact the Game Manufacturer (OEM) for information on specific software releases approved for use within your gaming jurisdiction.

JCM Global recommends using the latest version for maximum acceptance, security, and performance.

JCM eLearning Offerings

JCM offers the following Training Options to help keep your JCM Products performing within factory specifications:

Online Training

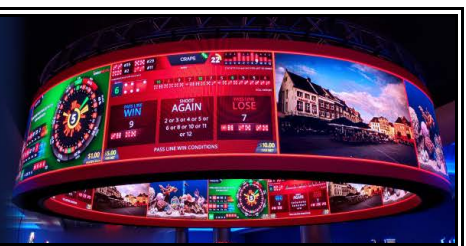
For those who prefer self-study, Online Training is available 24/7. Training can be completed as your schedule permits. A Certificate of Completion is provided upon course completion.

Virtual Training

Instructor-led events for all JCM products are also available. Full interaction between attendees and the Instructor meets the needs of your team. Contact JCM Training at training@jcmglobal.com for more information.

Create Immersive Environments with JCM Global® Digital Signage Solutions

JCM Global Digital Signage Solutions allow operators to communicate with their guests in more meaningful and entertaining ways. With unsurpassed color uniformity and dazzling pixel-to-pixel resolution, JCM's digital signage technology offers guests a unique experience in sports books, hotel lobbies, casino floors, and more. The Digital Signage Solutions product line includes flat, curved, cube, and transparent displays that showcase engaging and impactful video content. From large scale LED video walls to intricate architectural signage, JCM delivers breathtaking installations that are only limited by the imagination.





FREE JCM TRAINING AVAILABLE 24/7

Technicians need training, but is time or class availability a problem? JCM Online Training offers classes to meet your schedule and your needs. JCM Online Training Programs feature the same content as JCM On-site Training with the added convenience of flexible scheduling. Visit training.jcmglobal.com for more information or to register for classes.

Technical Bulletin 202209 September 2022

Make the JCM Global Connection G2E Booth #4039 October 10-13, 2022 Venetian Expo, Las Vegas

JCM Global® (JCM) and its partners are the industry leaders in Cash Management and automated solutions across the entire Casino Floor, in the Cage and in the Count Room.

Enhancing the Guest Experience

JCM's spirit of innovation continues to propel the gaming industry forward, and in Booth #4039 at G2E 2022, JCM will showcase new Mobile Payment Technology, its newest solution for Table Game Security, as well as the latest Count Room Solutions from our partner, CPS. These products are the latest in JCM's leading technology road map that helps operators of all sizes enhance the guest experience, increase efficiencies and boost security.

Boosting Security

Expanding on the FUZION® System's mobile payment options for both EGMs and table games, JCM will present its new BLE Mobile I/O® contactless technology. BLE Mobile I/O joins JCM's NFC Mobile I/O Button, and enables casinos to select the best mobile payment solution for their business and security needs. Customers can also see demonstrations of JCM's ICB® and PromoNet® Systems Solutions.

Increasing Efficiencies

Table games will be more secure and efficient with JCM's new iVERIFY™ System Technology. Using high-resolution camera and optical recognition technology, iVERIFY tracks and records currency and TITO transactions at live table games by verifying cash buy-in, TITO tickets, and tracks the chip inventory in the tray. JCM will also show CountR's award-winning TITA™ table game solution. A section of JCM's booth will be dedicated to Count Room Automation solutions populated with products from JCM's partner CPS, a world leader in Count-Sort equipment, including CPS' new XM Range™, the V-Series™, 7000i™,



Click Above to Receive a Complimentary Expo Hall Pass to G2E 2022

and ECM™ Software. The Cassida Zeus and JCM's own ICB ASAP® advanced count room solution driven by robotic automation will also be on display in the Automation Pavilion. Overhead, JCM will showcase a broad range of Digital Signage Solutions™, including DSS FLEX™, CUBE™ and VB-DIAMOND™. Make the JCM Connection at Booth #4039.

Current Service Manual Releases

Product	Rev.	Product	Rev.
DBV-500-S Operations Manual	1	TBV	4
DBV-400 Operations Manual	1	TBV-101-ASH	A
DT-200 BlueWave 2	7	UBA-10/11/14/24/25	4
EBA-40	3	UBA-RC	4
ICB 3.0 Web Reports Ops Manual	3	UBA Pro RT/RQ	1
iPRO	3	VEGA	6
iPRO-RC	4	VEGA-RC	3
iVIZION	7	FL Operator & Technician's Manual	3
JCM Tool Suite	4	GEN5 Operations Manual	2
PromoNet Marketing Studio	6	BlueWaveDX Tool (DT-300)	2
PromoNet Online Monitor	1		

To access JCM Product Manuals, visit: <https://exchange.jcmglobal.com>



JCM TECHNICAL SUPPORT CONTACTS

Headquarters (Japan)		
Sales and Service	+81-3-5962-3731	hq-jp@jcmglobal.com
Europe, Middle East, Africa, Russia		
Sales	+49-211-530645-50	support@jcmglobal.eu
Service	+49-211-530645-60	
Australia, Oceania		
Sales and Service	+612 96 48 0811	australia@jcmglobal.com
Southeast Asia		
Sales and Service	+853 28 72 2684	asiassupport@jcmglobal.com
North/South America/Canada/Caribbean		
Toll Free Product Support	(800) 683-7248 or (702) 651-0000	support@jcmglobal.com

After Hours Americas Support

JCM American prides itself in offering the best Customer Service in the industry. We offer a 24 hour After Hours Hotline, where Technical Support Personnel can be reached at any time, 7 days a week. To reach our 24/7 After Hours Hotline:
 1.) Call JCM American at (800) 683-7248.
 2.) Select "Option 1" and wait for the call to be transferred to the JCM after hours Technical Support line.
 3.) Speak with a certified JCM Support Technician about your situation.

JCM Global is a registered trademark of JCM American Corporation. All other product names mentioned herein may be registered trademarks or trademarks of their respective companies. Furthermore, TM and ® are not mentioned in each case in this publication.