

[www.jcmglobal.com](http://www.jcmglobal.com)

For updates on JCM Global products, services, and events, follow JCM Global on Facebook®, LinkedIn®, Twitter™ and YouTube™



[facebook.com/JCMglobal](https://facebook.com/JCMglobal)

[twitter.com/jcmglobal](https://twitter.com/jcmglobal)

[linkedin.com/company/jcm-global](https://linkedin.com/company/jcm-global)

[youtube.com/jcmglobal](https://youtube.com/jcmglobal)

## Parts are Parts

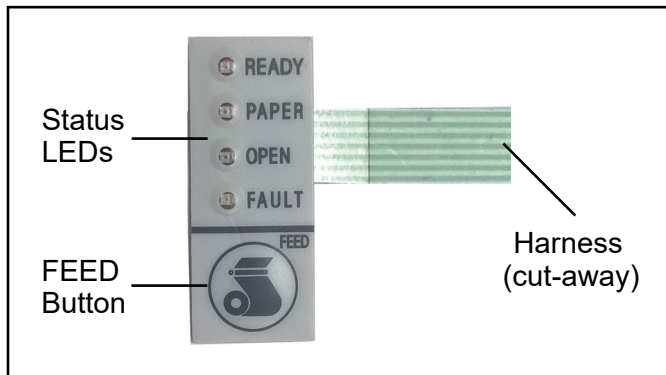


Figure 1 Membrane, Keypad for GEN5™ Printer (P/N #500-00005-100)

**Part No.** 500-00005-100

**Description:** Membrane, Keypad for GEN5 Printer

**Usage:** Featured on the JCM Global® GEN5 Printer, the Membrane Keypad (Figure 1) contains the Status LEDs and Feed Button. The Status LEDs provide a visual indication of various conditions of the GEN5 Printer, including:

- READY (GREEN LED) - Normal operation
- PAPER (YELLOW LED) - Out of Tickets (Paper)
- OPEN (ORANGE LED) - Printer Lid Open
- FAULT (RED LED) - Other Printer Conditions

The FEED Button is used to feed a Ticket through the GEN5 Printer, and to print Configuration Tickets.

To feed a Ticket through the GEN5 Printer, press and hold the FEED Button for approximately (3) seconds.

To print a Configuration Ticket, press the FEED Button twice.

## Latest JCM Software Listing

UNIT	Country	ID	Version	Check Sum	CRC
UBA-10/11-SS	USA	ID-003	V-2.82-52	4BDC	6359
UBA-10/11-SS	USA	ID-024	V-2.82-25	3BF2	6D5B
UBA-14/24-SS/SU	USA	ID-003	V-2.82-40	0E53	2F46
UBA-14/24-SS/SU	USA	ID-0G8	V-2.82-76	7143	9783
UBA-14/24-SS/SU	USA	ID-024	V-2.82-37	FED2	F6EB
UBA-14/24-SS/SU	USA	ID-028	V-2.82-25	190A	0653
iVIZION-100 SS/SU	USA	ID-003	V-2.84-44	94D4	0789
iVIZION-100 SS/SU	USA	ID-008	V-2.83-22	7DEB	39B4
iVIZION-100 SS/SU	USA	ID-024	V-2.84-15	C0FC	652D
iVIZION-100 SS/SU	USA	ID-028	V-2.86-30	5C1E	31CB
iVIZION-100 SS/SU	USA	ID-0G8	V-2.84-39	E589	DA07
UBA-10/11-SS	CAN	ID-003	V-2.82-52	B445	56DD
UBA-10/11-SS	CAN	ID-024	V-2.82-25	8FC3	D9AD
UBA-14/24-SS/SU	CAN	ID-003	V-2.82-40	CEF6	5E8C
UBA-14/24-SS/SU	CAN	ID-024	V-2.82-37	C66F	E2BE
UBA-14/24-SS/SU	CAN	ID-028	V-2.82-25	FD47	E01A
UBA-14/24-SS/SU	CAN	ID-0G8	V-2.82-74	F0D0	9716
iVIZION-100 SS/SU	CAN	ID-003	V-2.82-44	5B45	208A
iVIZION-100 SS/SU	CAN	ID-024	V-2.82-15	C6B6	8D4D
iVIZION-100 SS/SU	CAN	ID-028	V-2.82-30	C8BB	0AAA
iVIZION-100 SS/SU	CAN	ID-0G8	V-2.82-38	5784	92A2

The Latest JCM Software Listing (shown above) identifies specific software versions that have been released to OEMs. It is the responsibility of the OEM to obtain all required approvals from Gaming Regulators and Jurisdictional Authorities necessary for use of approved software versions. Contact the Game Manufacturer (OEM) for information on specific software releases approved for use within your gaming jurisdiction.

JCM recommends using the latest version for maximum acceptance, security, and performance.

## JCM Service Offerings

JCM offers the following services to help keep your JCM Products performing within factory specifications:

- Warranty and Non-Warranty Service and Repair
- Custom Training Classes
- Unit Exchange Programs
- Preventive Maintenance Programs
- ICB Data Analysis
- Validator Performance Analysis

## JCM Global® Is The Source For All Your Display Needs!

JCM Global incorporates the latest digital display technology (single screen to large scale video wall solutions), digital content creation services and networked solutions for all your media needs. JCM Global products combine unsurpassed color uniformity and the best pixel-to-pixel resolution available in the Gaming industry in an easy-to-install package. JCM Global MAX-S™ provides a high-resolution interlocking panel solution for large scale LED Video screens. JCM Global FLEX™ offers articulating panels for curved surface implementations. JCM Global CUBE & FLOOR™ supports 3-D Video Displays and JCM Global ELEMENTS™ supports outdoor installations. For details, visit the JCM Global website at [www.jcmglobal.com](http://www.jcmglobal.com)!





## FREE ONLINE TRAINING

Technicians need training, but is time or class availability a problem? JCM Online Training offers classes to meet your schedule and your needs. JCM Online Training Programs feature the same content as JCM On-site Training with the added convenience of flexible scheduling. Visit [training.jcmglobal.com](http://training.jcmglobal.com) for more information or to register for classes.

Technical Bulletin 201911 November 2019

### Technical Tip

**Question:** Is an updated version of the JCM® DFU Downloader Software Tool available? What changes have been made?

**Answer:** JCM is releasing Version 2.4.2 of the JCM DFU Downloader Software Tool (**Figure 2**). The JCM DFU Downloader has been modified to use Windows 10® certified Printer Drivers for improved connections with Windows 10 (all builds) and better communication with JCM GEN2U™, GEN5™ and CouponXpress™ Thermal Printers.

**Note:** .NET Framework 2.0.50727 (or later) must be installed on your desktop PC to use JCM DFU Downloader Software Tool V2.4.2. The JCM DFU Downloader Software Tool V2.4.2 can be downloaded from the Software Tools section of the JCM Global website at [www.jcmglobal.com](http://www.jcmglobal.com).

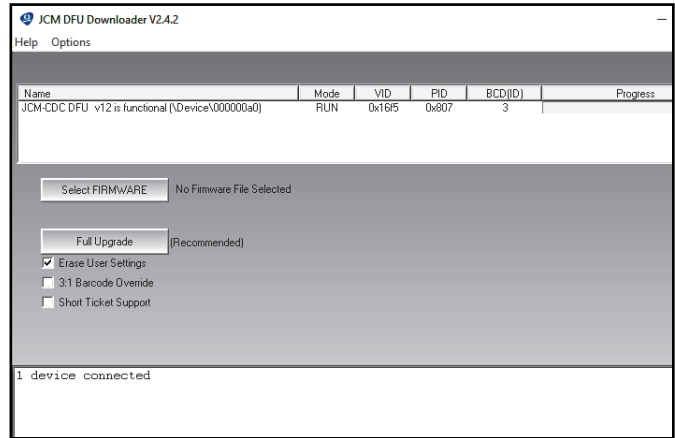


Figure 2 JCM DFU Downloader V2.4.2 User Interface (cut-away)

For additional information on JCM Products, visit the JCM Global website at [www.jcmglobal.com](http://www.jcmglobal.com), or contact your local JCM Sales Representative at (800) 683-7248.

### Current Service Manual Releases

Product	Rev.	Product	Rev.
DBV-30X	4	iVIZION	7
DBV-500 Operations Manual	1	Taiko (PUB-7/11)	6
DBV-400 Operations Manual	1	TBV	3
DT-200 BlueWave 2	7	TBV-101-ASH	A
EBA-40	2	UBA-10/11/14/24/25	3b
ICB Service Manual	4	UBA-RC	3
ICB 3.0 Web Reports Ops Manual	3	VEGA	4
iPRO	2	VEGA-RC	3
iPRO-RC	3	FL Operator & Technician's Manual	3
RC-10 Service Manual	1	GEN5 Operations Manual	2
JCM Tool Suite	4	BlueWaveDX Tool (DT-300)	1

To access JCM Product Manuals, please visit: [www.jcmglobal.com](http://www.jcmglobal.com)



### JCM TECHNICAL SUPPORT CONTACTS

#### Headquarters (Japan)

Sales and Service +81-3-5962-3731 [hq-jp@jcmglobal.com](mailto:hq-jp@jcmglobal.com)

#### Europe, Middle East, Africa, Russia

Sales +49-211-530645-50  
Service +49-211-530645-60 [support@jcmglobal.eu](mailto:support@jcmglobal.eu)

#### Australia, Oceania

Sales and Service +612 96 48 0811 [australia@jcmglobal.com](mailto:australia@jcmglobal.com)

#### Southeast Asia

Sales and Service +853 28 72 2684 [asiastupport@jcmglobal.com](mailto:asiastupport@jcmglobal.com)

#### North/South America/Canada/Caribbean

Toll Free Product Support (800) 683-7248 or (702) 651-0000 [support@jcmglobal.com](mailto:support@jcmglobal.com)

#### After Hours Americas Support

JCM American prides itself in offering the best Customer Service in the industry. We offer a 24 hour After Hours Hotline, where Technical Support Personnel can be reached at any time, 7 days a week. To reach our 24/7 After Hours Hotline:  
1.) Call JCM American at (800) 683-7248.  
2.) Select "Option 1" and wait for the call to be transferred to the JCM after hours Technical Support line.  
3.) Speak with a certified JCM Support Technician about your situation.

JCM Global is a registered trademark of JCM American Corporation. All other product names mentioned herein may be registered trademarks or trademarks of their respective companies. Furthermore, TM and © are not mentioned in each case in this publication.