

www.jcmglobal.com

For updates on JCM Global products, services, and events, follow JCM Global on Facebook®, LinkedIn®, Twitter™ and YouTube™



facebook.com/JCMglobal

twitter.com/jcmglobal

linkedin.com/company/jcm-global

youtube.com/jcmglobal

Parts are Parts

Cleaning Kit Contents



Figure 1 JCM® Printer Cleaning Kit (P/N 350-00292-100)

Part No. 350-00292-100

Description: JCM® Printer Cleaning Kit

Usage: The JCM Printer Cleaning Kit (Figure 1) includes all the tools necessary to thoroughly clean a GEN Series Printer (e.g., GEN2U™ or GEN5™). The Printer Cleaning Kit includes the following items (10 of each):

- Cleaning Swabs - Used to clean the Print Head surface and the Print Sensors;
- Cleaning Wipes - Used to wipe clean the Printer Rollers and all Ticket Path surfaces on the Upper Presenter and Lower Presenter;
- Cleaning Cards - Feeding the Cleaning Card through the Printer is a fast and easy way to clean the Print Head and Rollers.

Latest JCM Software Listing

UNIT	Country	ID	Version	Check Sum	CRC
UBA-10/11-SS	USA	ID-003	V-2.82-52	4BDC	6359
UBA-10/11-SS	USA	ID-024	V-2.82-25	3BF2	6D5B
UBA-14/24-SS/SU	USA	ID-003	V-2.82-40	0E53	2F46
UBA-14/24-SS/SU	USA	ID-0G8	V-2.82-74	F823	AE34
UBA-14/24-SS/SU	USA	ID-024	V-2.82-37	FED2	F6EB
UBA-14/24-SS/SU	USA	ID-028	V-2.82-25	190A	0653
iVIZION-100 SS/SU	USA	ID-003	V-2.84-44	94D4	0789
iVIZION-100 SS/SU	USA	ID-008	V-2.83-22	7DEB	39B4
iVIZION-100 SS/SU	USA	ID-024	V-2.84-15	C0FC	652D
iVIZION-100 SS/SU	USA	ID-028	V-2.84-30	DB30	7EBB
iVIZION-100 SS/SU	USA	ID-0G8	V-2.84-39	E589	DA07
UBA-10/11-SS	CAN	ID-003	V-2.82-52	B445	56DD
UBA-10/11-SS	CAN	ID-024	V-2.82-25	8FC3	D9AD
UBA-14/24-SS/SU	CAN	ID-003	V-2.82-40	CEF6	5E8C
UBA-14/24-SS/SU	CAN	ID-024	V-2.82-37	C66F	E2BE
UBA-14/24-SS/SU	CAN	ID-028	V-2.82-25	FD47	E01A
UBA-14/24-SS/SU	CAN	ID-0G8	V-2.82-74	F0D0	9716
iVIZION-100 SS/SU	CAN	ID-003	V-2.82-44	5B45	208A
iVIZION-100 SS/SU	CAN	ID-024	V-2.82-15	C6B6	8D4D
iVIZION-100 SS/SU	CAN	ID-028	V-2.82-30	C8BB	0AAA
iVIZION-100 SS/SU	CAN	ID-0G8	V-2.82-38	5784	92A2

The Latest JCM Software Listing (shown above) identifies specific software versions that have been released to OEMs. It is the responsibility of the OEM to obtain all required approvals from Gaming Regulators and Jurisdictional Authorities necessary for use of approved software versions. Contact the Game Manufacturer (OEM) for information on specific software releases approved for use within your gaming jurisdiction.

JCM recommends using the latest version for maximum acceptance, security, and performance.

JCM Service Offerings

JCM offers the following services to help keep your JCM Products performing within factory specifications:

- Warranty and Non-Warranty Service and Repair
- Custom Training Classes
- Unit Exchange Programs
- Preventive Maintenance Programs
- ICB Data Analysis
- Validator Performance Analysis

JCM Global® Is The Source For All Your Video Needs!

JCM Global incorporates the latest digital display technology (single screen to large scale video wall solutions), digital content creation services and networked solutions for all your media needs. JCM Global products combine unsurpassed color uniformity and the best pixel-to-pixel resolution available in the Gaming industry in an easy-to-install package. JCM Global MAX-S provides a high-resolution interlocking panel solution for large scale LED Video screens. JCM Global FLEX offers articulating panels for curved surface implementations. JCM Global CUBE supports 3-D Video Displays and JCM Global ELEMENTS supports outdoor installations. For details, visit the JCM Global website at www.jcmglobal.com!





FREE ONLINE TRAINING

Technicians need training, but is time or class availability a problem? JCM Online Training offers classes to meet your schedule and your needs. JCM Online Training Programs feature the same content as JCM On-site Training with the added convenience of flexible scheduling. Visit training.jcmglobal.com for more information or to register for classes.

Technical Bulletin 201906 June 2019

Technical Tip

Question: Is an updated version of the JCM® Tool Suite available? What changes have been made?

Answer: JCM has released Version 1.44.0.1 of the JCM Tool Suite Standard Edition Software Tool (**Figure 2**) as an update to Version 1.42.00. This version features the following changes:

- The iVIZION® Sensor Adjustment Tool has been updated to V1.66.0.0, with enhanced UV Adjustment and improved support for iVIZION Units to reach proper reference values.
- Support for TBV™-R Transaction Based Validators has been added to the Sensor Adjustment Tool and Performance Test Tool
- For UBA®-1X/2X Universal Bill Acceptors, the Sensor Adjustment Tool has been updated to V1.14.0.0, and features improved Offset D/A of Lower Sensor Boards that have not been updated.

Note: The JCM Tool Suite Software Tool V1.44.0.1 can be downloaded from the Software Tools section of the JCM Global website at www.jcmglobal.com.

For additional information on the JCM Tool Suite Software Tool and other JCM Products, visit the JCM Global website at www.jcmglobal.com, or contact your local JCM Sales Representative at (800) 683-7248.

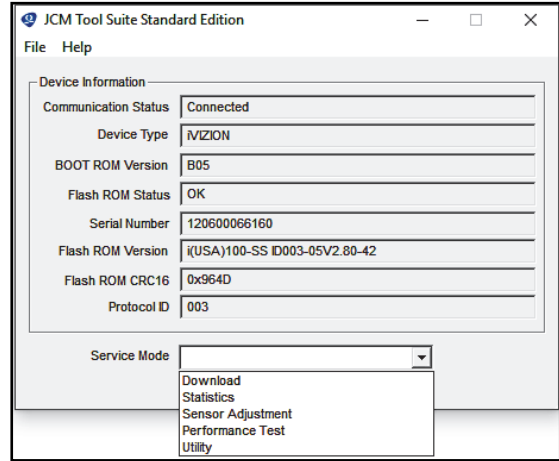


Figure 2 JCM Tool Suite V1.44.0.1 User Interface (cut-away)

Current Service Manual Releases

Product	Rev.	Product	Rev.
DBV-30X	4	iVIZION	7
DBV-500 Operations Manual	1	Taiko (PUB-7/11)	6
DBV-400 Operations Manual	1	TBV	3
DT-200 BlueWave 2	7	TBV-101-ASH	A
EBA-40	2	UBA-10/11/14/24/25	3b
ICB Service Manual	4	UBA-RC	3
ICB 3.0 Web Reports Ops Manual	3	VEGA	4
IPRO	2	VEGA-RC	3
IPRO-RC	3	FL Operator & Technician's Manual	3
RC-10 Service Manual	1	GEN5 Operations Manual	2
JCM Tool Suite	4	BlueWaveDX Tool (DT-300)	1

To access JCM Product Manuals, please visit: www.jcmglobal.com



JCM TECHNICAL SUPPORT CONTACTS		
Headquarters (Japan)		
Sales and Service	+81-3-5962-3731	hq-jp@jcmglobal.com
Europe, Middle East, Africa, Russia		
Sales	+49-211-530645-50	support@jcmglobal.eu
Service	+49-211-530645-60	
Australia, Oceania		
Sales and Service	+612 96 48 0811	australia@jcmglobal.com
Southeast Asia		
Sales and Service	+853 28 72 2684	asiasupport@jcmglobal.com
North/South America/Canada/Caribbean		
Toll Free Product Support	(800) 683-7248 or (702) 651-0000	support@jcmglobal.com
After Hours Americas Support		
JCM American prides itself in offering the best Customer Service in the industry. We offer a 24 hour After Hours Hotline, where Technical Support Personnel can be reached at any time, 7 days a week. To reach our 24/7 After Hours Hotline: 1.) Call JCM American at (800) 683-7248. 2.) Select "Option 1" and wait for the call to be transferred to the JCM after hours Technical Support line. 3.) Speak with a certified JCM Support Technician about your situation.		

JCM Global is a registered trademark of JCM American Corporation. All other product names mentioned herein may be registered trademarks or trademarks of their respective companies. Furthermore, TM and © are not mentioned in each case in this publication.