

www.jcmglobal.com

For updates on JCM Global products, services, and events, follow JCM Global on Facebook®, LinkedIn®, Twitter™ and YouTube™



facebook.com/JCMglobal

twitter.com/jcmglobal

linkedin.com/company/jcm-global

youtube.com/jcmglobal

Parts are Parts



Figure 1 SIIG® 4 Port Hub (P/N JU-H30812-S1)

Part No. JU-H30812-S1

Description: SIIG® 4 Port Hub

Usage: The SIIG 4 Port Hub (P/N JU-H30812-S1) (Figure 1) offers full USB 3.0 high speed (5Gbps) data transfer. All ports support USB 3.0 and are compatible with USB 2.0 and 1.1. The Hub enables up to four (4) USB-compatible devices to be connected to a PC or laptop computer that has limited USB port availability. The 4 Port Hub is compatible with all JCM products, including the UBA and iVIZION Banknote Acceptors, and GEN2U™ and GEN5™ Printers.

Latest JCM Software Listing

UNIT	Country	ID	Version	Check Sum	CRC
UBA-10/11-SS	USA	ID-003	V-2.78-51	D6F5	0653
UBA-10/11-SS	USA	ID-024	V-2.78-24	9478	0C33
UBA-14/24-SS/SU	USA	ID-003	V-2.78-39	C51D	9914
UBA-14/24-SS/SU	USA	ID-0G8	V-2.80-74	8062	8DD4
UBA-14/24-SS/SU	USA	ID-024	V-2.78-36	5CC9	9374
UBA-14/24-SS/SU	USA	ID-028	V-2.78-25	91A6	8F70
iPRO-101	USA	ID-003	V-2.30-25	3112	6B08
iPRO-101	USA	ID-024	V-2.00-10	7CC4	0462
iPRO-101	USA	ID-028	V-1.77-04		2717
iPRO-101	USA	ID-0G8	V-2.20-07	F257	8343
iPRO-101	USA	ID-008	V-1.82-02	0584	48E8
iVIZION-100 SS/SU	USA	ID-003	V-2.53-38	DB41	44F9
iVIZION-100 SS/SU	USA	ID-008	V-2.56-20	3B11	1534
iVIZION-100 SS/SU	USA	ID-024	V-2.53-15	F6E4	21DD
iVIZION-100 SS/SU	USA	ID-028	V-2.53-30	6F1A	1FD5
iVIZION-100 SS/SU	USA	ID-0G8	V-2.66-32	1366	7736
UBA-10/11-SS	CAN	ID-003	V-2.80-52	14BD	3173
UBA-10/11-SS	CAN	ID-024	V-2.80-25	6A81	0231
UBA-14/24-SS/SU	CAN	ID-003	V-2.80-40	17E2	6B08
UBA-14/24-SS/SU	CAN	ID-024	V-2.80-37	BA95	421D
UBA-14/24-SS/SU	CAN	ID-028	V-2.80-25	F855	AC90
UBA-14/24-SS/SU	CAN	ID-0G8	V-2.80-74	C4C6	CFC9
iPRO-100	CAN	ID-003	V2.31-26	F3F1	54EC
iPRO-100	CAN	ID-008	V1.82-02	8572	0CA6
iPRO-100	CAN	ID-024	V-2.31-12	7D39	1C91
iPRO-100	CAN	ID-028	V-2.31-06	D789	0653
iVIZION-100 SS/SU	CAN	ID-003	V-2.72-40	B5C4	6451
iVIZION-100 SS/SU	CAN	ID-024	V-2.72-15	FF21	EE81
iVIZION-100 SS/SU	CAN	ID-028	V-2.72-30	D668	7F97
iVIZION-100 SS/SU	CAN	ID-0G8	V-2.72-36	F4E5	65CF

The Latest JCM Software Listing (shown above) identifies specific software versions that have been released to OEMs. It is the responsibility of the OEM to obtain all required approvals from Gaming Regulators and Jurisdictional Authorities necessary for use of approved software versions. Contact the Game Manufacturer (OEM) for information on specific software releases approved for use within your gaming jurisdiction.

JCM recommends using the latest version for maximum acceptance, security, and performance.

JCM Service Offerings

JCM offers the following services to help keep your JCM Products performing within factory specifications:

- Warranty and Non-Warranty Service and Repair
- Custom Training Classes
- Unit Exchange Programs
- Preventive Maintenance Programs
- ICB Data Analysis
- Validator Performance Analysis

JCMedia™ Is The Source For All Your Video Needs!

JCMedia™ solutions incorporate the latest digital display technology (single screen to large scale video wall solutions), digital content creation services and networked solutions for all your media needs. JCMedia now offers the only upgradeable pixel pitch LED Displays using JCM's PIXELPRO™ Display Technology. PIXELPRO products combine unsurpassed color uniformity and the best pixel-to-pixel resolution available in the Gaming industry in an easy-to-install package. PIXELPRO MAX™ provides a high-resolution interlocking panel solution for large scale LED Video screens. PIXELPRO FLEX™ offers flexible panels for curved surface implementations, and PIXELPRO CUBE™ supports 3-D Video Displays. For more information, please visit the JCM Global website at jcmmedia.jcmglobal.com!





FREE JCM TRAINING AVAILABLE 24/7

Technicians need training, but time or class availability is a problem? JCM Online Training offers classes to meet your schedule and your needs. JCM Online Training Programs feature the same content as JCM On-site Training with the added convenience of flexible scheduling. Visit training.jcmglobal.com for more information or to register for classes.

Technical Bulletin 201707 July 2017

Technical Tips

Question: Is an update available for the FLDFU Printer Download Application?

Answer: JCM has updated the FLDFU Printer Download Application. The Printer Downloader has been released as JCM DFU Downloader V2.2.10 (**Figure 2**). The JCM DFU Downloader features improved installation of Windows® 7/8/10 drivers, and supports the GEN2U, GEN5, KBM60-2™ and CouponXpress™ Printers.

- During the first download to a Printer, the BSP (Board Support Package) will be updated to version P9Bsp_20170224;
- On GEN2U Printers, the Insert Upgrade Key message will be displayed.
 - If a jumper is installed between Pins 2 and 3 on the GEN2U Printer (factory default), click the Yes screen button to bypass the message.
 - If no jumper is present (e.g., on older GEN2U Printer Units), the Upgrade Key must be inserted to proceed. For details, refer to Page 10 of the [GEN2U Quick Reference Guide #960-000177R](#) or Page 6 of the [JCM DFU Downloader Manual for GEN2U, GEN3, GEN5, KBM60 \(#MNL-00071 Rev.03\)](#).

The JCM DFU Downloader application is available at <http://am-en.jcmglobal.com/files/software-tools>.

For assistance, contact support@jcmglobal.com.

For additional information on JCM Products, visit the JCM Global website at www.jcmglobal.com, or contact your local JCM Sales Representative at (800) 683-7248.

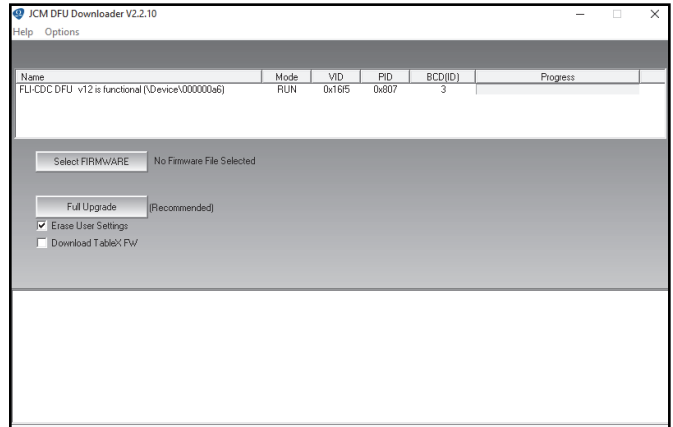


Figure 2 JCM DFU Downloader V2.2.10 User Interface

Current Service Manual Releases

Product	Rev.	Product	Rev.
DBV-30X	4	iVIZION	7
DBV-500 Operations Manual	1	Taiko (PUB-7/11)	6
DBV-400 Operations Manual	1	TBV	2
DT-200 BlueWave 2	7	TBV-101-ASH	A
EBA-40	2	UBA-10/11/14/24/25	3b
ICB Service Manual	4	UBA-RC	2
ICB 3.0 Web Reports Ops Manual	2	VEGA	4
iPRO	1	VEGA-RC	3
iPRO-RC	2	FLDFU Download Manual	3
RC-10 Service Manual	1	FL Operator & Technician's Manual	3
JCM Tool Suite	4	GEN5™ Operations Manual	A

To access JCM Product Manuals, please visit: www.jcmglobal.com

JCM TECHNICAL SUPPORT CONTACTS		
Headquarters (Japan)		
Sales and Service	+81-3-5962-3731	hq-jp@jcmglobal.com
Europe, Middle East, Africa, Russia		
Sales	+49-211-530645-50	hq-eu@jcmglobal.com
Service	+49-211-530645-60	
Australia, Oceania		
Sales and Service	+612 96 48 0811	australia@jcmglobal.com
Southeast Asia		
Sales and Service	+853 28 72 2684	asiasupport@jcmglobal.com
North/South America/Canada/Caribbean		
Toll Free Product Support	(800) 683-7248 or (702) 651-0000	support@jcmglobal.com
After Hours Americas Support		
<p>JCM American prides itself in offering the best Customer Service in the industry. We offer a 24 hour After Hours Hotline, where Technical Support Personnel can be reached at any time, 7 days a week. To reach our 24/7 After Hours Hotline:</p> <ol style="list-style-type: none"> 1.) Call JCM American at (800) 683-7248. 2.) Select "Option 1" and wait for the call to be transferred to the JCM after hours Technical Support line. 3.) Speak with a certified JCM Support Technician about your situation. 		

JCM Global is a registered trademark of JCM American Corporation. All other product names mentioned herein may be registered trademarks or trademarks of their respective companies. Furthermore, TM and ® are not mentioned in each case in this publication.