

[www.jcmglobal.com](http://www.jcmglobal.com)

For updates on JCM Global products, services, and events, follow JCM Global on FaceBook®, Google®, LinkedIn®, Twitter™ and YouTube™



[facebook.com/JCMglobal](https://facebook.com/JCMglobal)

[twitter.com/jcmglobal](https://twitter.com/jcmglobal)

[Gplus.to/JCMglobal](https://plus.google.com/JCMglobal)

[youtube.com/jcmglobal](https://youtube.com/jcmglobal)

[linkedin.com/company/jcm-global](https://linkedin.com/company/jcm-global)

## Parts are Parts

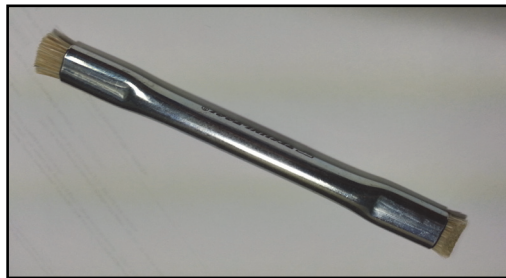


Figure 1 Cleaning Brush

**Part No.** 501-000097R

**Description:** Cleaning Brush

**Usage:** Due to environmental conditions where JCM products are used, periodic maintenance is required to ensure optimum product performance. The Cleaning Brush (**Figure 1**) is used to remove dust, dirt and debris from the rollers, gears, and other surfaces on JCM products (such as bill validators, printers, and cash boxes).

To use the Cleaning Brush:

- 1) With the unit power **OFF**, hold the roller steady using a small screwdriver or pick.
- 2) Brush residue from the roller, while rotating the roller 360 degrees to clean the full circumference.
- 3) Brush dust and dirt from the gears and remove other debris from the unit.
- 4) Wipe each roller, surface, and the paper path with a clean, slightly damp, lint-free Microfiber cloth.

## Latest JCM Software Listing

UNIT	Country	ID	Version	Check Sum	CRC
UBA-10/11-SS	USA	ID-003	V-2.78-51	D6F5	0653
UBA-10/11-SS	USA	ID-024	V-2.78-24	9478	0C33
UBA-14/24-SS/SU	USA	ID-003	V-2.78-39	C51D	9914
UBA-14/24-SS/SU	USA	ID-0G8	V-2.78-73	6E61	AE34
UBA-14/24-SS/SU	USA	ID-024	V-2.78-36	5CC9	9374
UBA-14/24-SS/SU	USA	ID-028	V-2.78-25	91A6	8F70
iPRO-101	USA	ID-003	V-2.30-25	3112	6B08
iPRO-101	USA	ID-024	V-2.00-10	7CC4	0462
iPRO-101	USA	ID-028	V-1.77-04		2717
iPRO-101	USA	ID-0G8	V-2.20-07	F257	8343
iPRO-101	USA	ID-008	V-1.82-02	0584	48E8
iVIZION-100 SS/SU	USA	ID-003	V-2.53-38	DB41	44F9
iVIZION-100 SS/SU	USA	ID-008	V-2.56-20	3B11	1534
iVIZION-100 SS/SU	USA	ID-024	V-2.53-15	F6E4	21DD
iVIZION-100 SS/SU	USA	ID-028	V-2.53-30	6F1A	1FD5
iVIZION-100 SS/SU	USA	ID-0G8	V-2.53-29	2EBE	A0BB
UBA-10/11-SS	CAN	ID-003	V-2.77-51	0554	790E
UBA-10/11-SS	CAN	ID-024	V-2.77-24	91CE	63CC
UBA-14/24-SS/SU	CAN	ID-003	V-2.77-39	FA7B	71CA
UBA-14/24-SS/SU	CAN	ID-024	V-2.77-36	E04E	467F
UBA-14/24-SS/SU	CAN	ID-028	V-2.77-25	EFD5	63CC
UBA-14/24-SS/SU	CAN	ID-0G8	V-2.77-73	E4CC	87B4
iPRO-100	CAN	ID-003	V2.31-26	F3F1	54EC
iPRO-100	CAN	ID-008	V1.82-02	8572	0CA6
iPRO-100	CAN	ID-024	V-2.31-12	7D39	1C91
iPRO-100	CAN	ID-028	V-2.31-06	D789	0653
iVIZION-100 SS/SU	CAN	ID-003	V-2.23-37	3742	FFB2
iVIZION-100 SS/SU	CAN	ID-024	V-2.23-15	C0BA	713F
iVIZION-100 SS/SU	CAN	ID-028	V-2.23-29	961E	09D4
iVIZION-100 SS/SU	CAN	ID-0G8	V-2.51-29	06B5	7DD8

The Latest JCM Software Listing (shown above) identifies specific software versions that have been released to OEMs. It is the responsibility of the OEM to obtain all required approvals from Gaming Regulators and Jurisdictional Authorities necessary for use of approved software versions. Contact the Game Manufacturer (OEM) for information on specific software releases approved for use within your gaming jurisdiction.

JCM recommends using the latest version for maximum acceptance, security, and performance.

## JCM Service Offerings

**JCM® offers the following services to help keep your JCM Products performing within factory specifications:**

**Warranty and Non-Warranty Service and Repair**

**Preventive Maintenance Programs**

**Custom Training Classes**

**ICB Data Analysis**

**Unit Exchange Programs**

**Validator Performance Analysis**

## Transitioning FutureLogic® Exchange to JCM Global® Website

JCM Global will be transitioning all documentation, applications and videos specific to FutureLogic printers from the FutureLogic Exchange website to <http://jcmglobal.com>. GEN Printer applications, documentation, and other available resources are located under Support/Downloads. For example:

- Operation and Technical Manuals are located in the Product Manuals section.
- Application Software is located under Software Tools.
- Firmware Downloading videos are located under Training Videos.
- Firmware Requests can be submitted in the Firmware Request section.

Watch for upcoming announcements of the new JCM Exchange site in the near future!





# FREE REGIONAL TRAINING

Give your technicians the tools they need to keep your customers happy and your equipment running at peak efficiency.

For details on upcoming JCM Global Regional Training Events, go to: <http://www.jcmglobal.com>

Technical Bulletin 201601 January 2016

## Technical Tips

**Question:** What changes were made to the new version of JCM Tool Suite now available on the JCM Global website?

**Answer:** JCM Tool Suite Version 1.35 (Figure 2) includes updates to the Download, Statistics and Calibration applications. These updates include:

- Update to 'Statistics' for all Units to improve Reporting of ACCLOAD information.
- Improved Calibration for the TBV Units.
- Full support has been added for the EBA-40, DBV-400 and DBV-500 Banknote Validators.
- An update has been added to the DBV-400, DBV-500 and EBA-40 Calibration Program.

The JCM Tool Suite Version 1.35 can be downloaded from the JCM Global website at <http://www.jcmglobal.com>.

For additional information on JCM Products, visit the JCM Global website at [www.jcmglobal.com](http://www.jcmglobal.com), or contact your local JCM Sales Representative at (800) 683-7248.

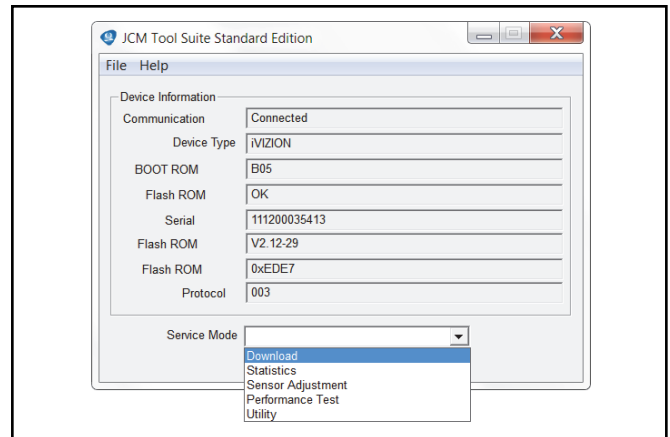


Figure 2 JCM Tool Suite Standard Edition v1.35

## Current Service Manual Releases

Product	Rev.	Product	Rev.
DBV-30X	4	iVIZION	5
DBV-500 Operations Manual	A	Taiko (PUB-7/11)	5
DBV-400 Operations Manual	A	TBV	2
DT-200 BlueWave 2	6	TBV-101-ASH	A
EBA-40	1	UBA-10/11/14/24/25	3b
ICB Service Manual	4	UBA-RC	2
ICB 3.0 Web Reports Ops Manual	A	VEGA	3
iPRO	1	VEGA-RC	3
iPRO-RC	2	FLDFU Download Manual	3
RC-10 Service Manual	1	FL Operator & Technician's Manual	3
JCM Tool Suite	3		

To access JCM Product Manuals, please visit: <http://www.jcmglobal.com>



### JCM TECHNICAL SUPPORT CONTACTS

#### Headquarters (Japan)

Sales and Service +81-3-5962-3731 [hq-jp@jcmglobal.com](mailto:hq-jp@jcmglobal.com)

#### Europe, Middle East, Africa, Russia

Sales +49-211-530645-50  
Service +49-211-530645-60 [hq-eu@jcmglobal.com](mailto:hq-eu@jcmglobal.com)

#### Australia, Oceania

Sales and Service +612 96 48 0811 [australia@jcmglobal.com](mailto:australia@jcmglobal.com)

#### Southeast Asia

Sales and Service +853 28 72 2684 [asiasupport@jcmglobal.com](mailto:asiasupport@jcmglobal.com)

#### North/South America/Canada/Caribbean

Toll Free Product Support (800) 683-7248 or (702) 651-0000 [techsupport@jcmglobal.com](mailto:techsupport@jcmglobal.com)

#### After Hours Americas Support

JCM American prides itself in offering the best Customer Service in the industry. We offer a 24 hour After Hours Hotline, where Technical Support Personnel can be reached at any time, 7 days a week. To reach our 24/7 After Hours Hotline:  
1.) Call JCM American at (800) 683-7248.  
2.) Select "Option 1" and wait for the call to be transferred to the JCM after hours Technical Support line.  
3.) Speak with a certified JCM Support Technician about your situation.

JCM is a registered trademark of JCM American Corporation. All other product names mentioned herein may be registered trademarks or trademarks of their respective companies. Furthermore, TM and ® are not mentioned in each case in this publication.