



# Technical Bulletin 201403

www.jcmglobal.com

For the latest updates on JCM Global products, services, and events, follow JCM Global on Facebook®, Google®, LinkedIn®, Twitter™, and YouTube™

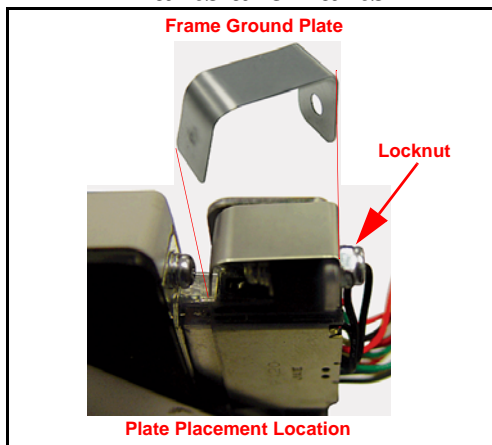


facebook.com/JCMglobal      twitter.com/jcmglobal  
 Gplus.to/JCMglobal      youtube.com/jcmglobal  
 linkedin.com/company/jcm-global

## Latest JCM Software Listing

UNIT	Country	ID	Version	Check Sum	CRC
UBA-10/11-SS	USA	ID-003	V-2.51-49	DB4C	1C04
UBA-10/11-SS	USA	ID-024	V-2.51-23	04E9	A0A3
UBA-14/24-SS/SU	USA	ID-003	V-2.51-36		BE96
UBA-14/24-SS/SU	USA	ID-0G8	V-2.51-72		EAEF
UBA-14/24-SS/SU	USA	ID-024	V-2.51-34		39B7
UBA-14/24-SS/SU	USA	ID-028	V-2.51-24		6B9D
iVIZION-100 SS/SU	USA	ID-003	V-2.07-29		C65A
iVIZION-100 SS/SU	USA	ID-024	V-2.07-14		C216
iVIZION-100 SS/SU	USA	ID-028	V-2.11-28		25F4
iVIZION-100 SS/SU	USA	ID-0G8	V-2.07-23		BBA5
UBA-10/11-SS	CAN	ID-003	V-2.53-50	A351	7FC8
UBA-10/11-SS	CAN	ID-024	V-2.53-23	714C	1455
UBA-14/24-SS/SU	CAN	ID-003	V-2.52-37	959B	B001
UBA-14/24-SS/SU	CAN	ID-024	V-2.52-34		3F71
UBA-14/24-SS/SU	CAN	ID-028	V-2.52-24		B094
UBA-14/24-SS/SU	CAN	ID-0G8	V-2.52-72		AEA1
iVIZION-100 SS/SU	CAN	ID-003	V-2.06-29		FBBC
iVIZION-100 SS/SU	CAN	ID-024	V-2.05-14		51A7
iVIZION-100 SS/SU	CAN	ID-028	V-2.05-27		04BA
iVIZION-100 SS/SU	CAN	ID-0G8	V-2.05-23		BB30

## Parts are Parts



**Part No.** 701-000222R

**Description:** iVIZION®/TBV™ Kit, Hardware, IVZ Harness

**Usage:** The iVIZION/TBV Kit features the Frame Ground Plate (shown above) and Hardware for the Harness attachment to the iVIZION/TBV. The Frame FG Plate is located on the Upper Frame Cable Mounting Screw assembly covering the top of the Cable Harness. The Kit includes the Floating Collars, screws, locknut, and Frame Ground Plate.

**Note:** If the Frame FG Plate is not installed or does not make firm contact with the iVIZION/TBV Transport Assembly, static electricity will not have a clean discharge path, and could negatively affect performance of iVIZION/TBV Bill Acceptors.

The Latest JCM Software Listing (shown above) identifies specific software versions that have been released to OEMs. It is the responsibility of the OEM to obtain all required approvals from Gaming Regulators and Jurisdictional Authorities necessary for use of approved software versions. Contact the Game Manufacturer (OEM) for information on specific software releases approved for use within your gaming jurisdiction.

JCM recommends using the latest version for maximum acceptance, security, and performance.

## JCM Service Offerings

**JCM® offers the following services to help keep your JCM Products performing within factory specifications:**

Preventive Maintenance Programs	Unit Exchange Programs
Custom Training Classes	ICB® Data Analysis
Warranty and Non-Warranty Service and Repair	Validator Performance Analysis

For additional information, contact your local JCM Sales Representative at (800) 683-7248.

## Save Time and Labor with JCM's Latest Intelligent Cash Box System

The ICB® (Intelligent Cash Box) system is a unique cash management system that allows the operator to track a Cash Box and its contents through the entire cash process. The ICB system eliminates the need for dedicating Cash Boxes to specific machines, or putting bar code identification labels on the Cash Boxes. The Cash Boxes are tracked electronically, eliminating most variance issues, and with the custom reports provided to each department, accuracy and efficiency are greatly improved.





# FREE REGIONAL TRAINING

Give your technicians the tools they need to keep your customers happy and your equipment running at peak efficiency.

For the local and regional training schedule, visit:

<http://www.jcmglobal.com>

Technical Bulletin 201403 March 2014

## Technical Tips

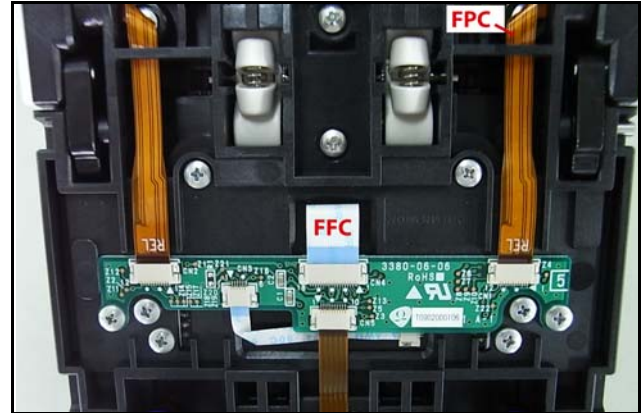
**Question:** What is the difference between the Gold and Blue-colored ribbon cables in the iVIZION?

**Answer:** The two types of flat cables used in the iVIZION are the **Flat Printed Circuit (FPC)** and the **Flat Flexible Cable (FFC)**.

- The Flat Printed Circuit (FPC) cables are gold in color, and function like “stretched-out” circuit boards. The wiring traces on the FPC can cross or reverse direction similar to the traces on a circuit board. The FPC may also feature components within the cable itself.
- The Flat Flexible Cables (FFC) are blue in color, and function as straight wire connectors. On the FFC, Pin 1 on one end of the cable matches Pin 1 on the other end of the cable.

**Note:** Always use caution when installing the FPC, since excessive bending or handling could break a connection.

For more information, contact your local JCM Sales Representative at (800) 683-7248.



Typical Installation of Flat Printed Circuit (FPC) and Flat Flexible Cables (FFC) in iVIZION Unit

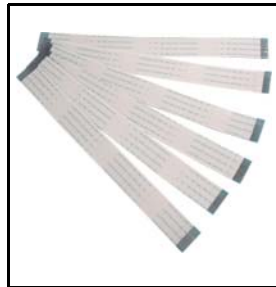
## Current Service Manual Releases

Product	Rev.	Product	Rev.
BlueWave DX (German)	A	iVIZION	4
DBV-30X	4	Taiko (PUB-7/11)	4
DT-200 BlueWave 2	5	TBV	1
EBA-3X	4	TBV-101-ASH	A
ICB Service Manual	4	UBA 10/11/14/24/25	3b
ICB Web Reports Ops Manual	1	UBA-RC	A
iPRO	A	VEGA	2
iPRO-RC	A	VEGA-RC	2
RC-10 Service Manual	1	PayCheck 4 Owner's Manual	A
JCM Tool Suite	2	PayCheck 4 Technician's Manual	A

To access Current Service Manuals, point your web browser to: <http://www.jcmglobal.com/en/support/downloads/manuals.aspx>



Flat Printed Circuit (FPC)



Flat Flexible Cables (FFC)



### JCM TECHNICAL SUPPORT CONTACTS

#### Headquarters (Japan)

Sales and Service +81-3-5962-3731 [hq-jp@jcmglobal.com](mailto:hq-jp@jcmglobal.com)

#### Europe, Africa, Russia, Middle East

Sales +49-211-530645-50  
Service +49-211-530645-60 [hq-eu@jcmglobal.com](mailto:hq-eu@jcmglobal.com)

#### Australia, Oceania

Sales and Service +853 28 72 2684 [asiapactechsupport@jcmglobal.com](mailto:asiapactechsupport@jcmglobal.com)

#### Southeast Asia

Sales and Service +853 28 72 2684 [asiapactechsupport@jcmglobal.com](mailto:asiapactechsupport@jcmglobal.com)

#### North/South America/Canada/Caribbean

Toll Free Product Support (800) 683-7248 or (702) 651-0000 [techsupport@jcmglobal.com](mailto:techsupport@jcmglobal.com)

#### After Hours Americas Support

JCM American prides itself in offering the best Customer Service in the industry. We offer a 24 hour After Hours Hotline, where Technical Support Personnel can be reached at any time, 7 days a week. To reach our 24/7 After Hours Hotline:  
1.) Call JCM American at (800) 683-7248.  
2.) Select "Option 1" and wait for the call to be transferred to the JCM after hours Technical Support line.  
3.) Speak with a certified JCM Support Technician about your situation.

JCM is a registered trademark of JCM American Corporation. All other product names mentioned herein may be registered trademarks or trademarks of their respective companies. Furthermore, TM and © are not mentioned in each case in this publication.