

www.jcmglobal.com

For the latest updates on JCM Global products, services, and events, follow JCM Global on FaceBook®, Google®, LinkedIn®, Twitter™, and YouTube™



facebook.com/JCMglobal twitter.com/jcmglobal
 gplus.to/JCMglobal youtube.com/jcmglobal
 linkedin.com/company/jcm-global

Parts are Parts



Part No. EDP #214104, 214105

Description:

Cash Box, iVIZION® S, MP2 (Normal Cash Box)
 Cash Box, iVIZION® L, MP2 (Large Cash Box)

Usage: The iVIZION Cash Boxes (Normal and Large sizes) have been modified for enhanced security. The Cash Box lids have been redesigned, increasing the size of the Door Flanges and modifying the Lock Mounting Flange.

Note: The redesigned iVIZION® Cash Boxes are now standard for new iVIZION and replacement Cash Box orders.

Latest JCM Software Listing

UNIT	Country	ID	Version	Check Sum	CRC
UBA-10/11-SS	USA	ID-003	V-2.51-49	DB4C	1C04
UBA-10/11-SS	USA	ID-024	V-2.30-19	8E4E	3922
UBA-14/24-SS/SU	USA	ID-003	V-2.08-23		6B08
UBA-14/24-SS/SU	USA	ID-0G8	V-2.08-66		31E9
UBA-14/24-SS/SU	USA	ID-024	V-2.08-28		6359
UBA-14/24-SS/SU	USA	ID-028	V-2.30-20		8923
iVIZION-SS/SU	USA	ID-003	V-1.84-23		E8E1
iVIZION-SS/SU	USA	ID-024	V-1.84-12		15C7
iVIZION-SS/SU	USA	ID-028	V-1.84-25		C9A3
UBA-10/11-SS	CAN	ID-003	V-2.50-48	78A7	06C6
UBA-10/11-SS	CAN	ID-024	V-2.50-23	E05F	B4F6
UBA-14/24-SS/SU	CAN	ID-003	V-2.50-35	7F55	7D6C
UBA-14/24-SS/SU	CAN	ID-024	V-2.50-34		95B2
UBA-14/24-SS/SU	CAN	ID-028	V-2.50-24		C5A9
UBA-14/24-SS/SU	CAN	ID-0G8	V-2.50-72		8F70
iVIZION-100 SS/SU	CAN	ID-003	V-1.86-24		7075
iVIZION-100 SS/SU	CAN	ID-024	V-1.86-13		C2D3
iVIZION-100 SS/SU	CAN	ID-028	V-1.86-25		4646
iVIZION-100 SS/SU	CAN	ID-0G8	V-1.86-22		4F7F

The Latest JCM Software Listing (shown above) does NOT identify the JCM Banknote Validator Software version that has been approved by Gaming Regulators and Jurisdictional Authorities for use in specific gaming jurisdictions. Please contact your local JCM Sales Representative at (800) 683-7248 to verify the correct software version approved for use in your specific gaming jurisdiction.

Current Service Manual Releases

Product	Rev.	Product	Rev.
BlueWave DX (German)	A	iVIZION	4
DBV-30X	4	Taiko (PUB-7/11)	4
DT-200 BlueWave 2	5	TBV	1
EBA-3X	4	TBV-101-ASH	A
ICB Service Manual	4	UBA 10/11/14/24/25	3b
ICB Web Reports Ops Manual	1	UBA-RC	A
iPRO	A	VEGA	1
iPRO-RC	A	VEGA-RC	2
RC-10 Service Manual	1	PayCheck 4 Owner's Manual	A
JCM Tool Suite	2	PayCheck 4 Technician's Manual	A

Improve Efficiency, Get Information Quickly with JCM's Sentry® 2 Bezel

The new Sentry 2 Bezel uses the latest technology to display Customer prompts and custom graphics. The Sentry 2 supports multiple languages for Customer prompts, as well as a separate language available for Attendants and Technicians. Settle disputes quickly with a single click of the Key FOB. When clicked, the last 5 Banknotes of TITO Tickets inserted will be displayed, along with their direction of insertion. Attendants can quickly determine the status of the Cash Box, Validator Acceptance Rate and Software information, all without opening a Game Door.





FREE REGIONAL TRAINING

Give your technicians the tools they need to keep your customers happy and your equipment running at peak efficiency.

For the local and regional training schedule, visit:

<http://www.jcmglobal.com>

Technical Bulletin 201305 May 2013

Technical Tips

Question: Several games were upgraded to the iVIZION, and now display intermittent Sensor Adjustment Errors (i.e., the **RED** Status LED flashes 3 times). What might cause this error to occur?

Answer: An investigation determined that a required Frame Ground Plate was not installed on the harness at the back of the Frame when the Game was upgraded to the iVIZION product.

The Frame Ground Plate provides a solid Earth ground for the elimination of electrostatic charge in the iVIZION unit. If the Frame Ground is not installed, the Sensor Adjustment Error (**RED** Status LED flashes 3 times) will occur, and/or the iVIZION unit performance will be affected. The Frame Ground Plate (EDP #151784) is attached to the top harness screw with a locknut (Figure 1), and should be positioned to make physical contact with the iVIZION connector screw head when the iVIZION is locked into the Frame (Figure 2).

For additional information, contact your local JCM Sales Representative at (800) 683-7248.

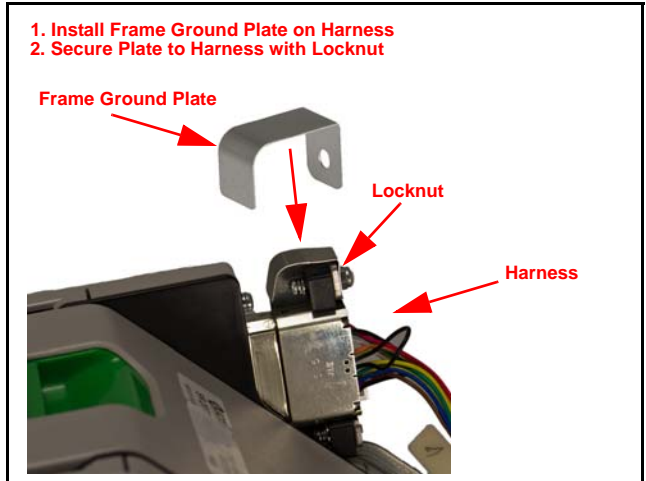


Figure 1: Installing Frame Ground Plate on Harness

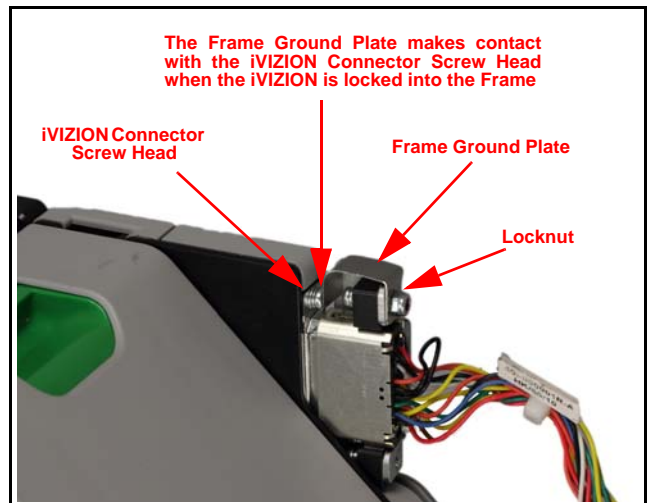


Figure 2: Plate/Harness Assembly (iVIZION Locked into Frame)



JCM TECHNICAL SUPPORT CONTACTS

Headquarters (Japan)

Sales and Service	81-6-6703-8405	hq-jp@jcmglobal.com
-------------------	----------------	---------------------

Europe, Africa, Russia, Middle East

Sales and Service	49-211-530645-0	hq-eu@jcmglobal.com
-------------------	-----------------	---------------------

Australia, Oceania

Sales and Service	61-2 9648 0811	ipayne@jcmglobal.com
-------------------	----------------	----------------------

Southeast Asia

Sales and Service	853 28 72 2648	asiapactechsupport@jcmglobal.com
-------------------	----------------	----------------------------------

North/South America/Canada/Caribbean

Toll Free Product Support	(800) 683-7248 or (702) 651-0000	techsupport@jcmglobal.com
---------------------------	----------------------------------	---------------------------

After Hours Americas Support

JCM American prides itself in offering the best Customer Service in the industry. We offer a 24 hour After Hours Hotline, where Technical Support Personnel can be reached at any time, 7 days a week. To reach our 24/7 After Hours Hotline:

- 1.) Call JCM American at (800) 683-7248.
- 2.) Select "Option 1" and wait for the call to be transferred to the JCM after hours Technical Support line.
- 3.) Speak with a certified JCM Support Technician about your situation.

JCM is a registered trademark of JCM American Corporation. All other product names mentioned herein may be registered trademarks or trademarks of their respective companies. Furthermore, TM and ® are not mentioned in each case in this publication.