

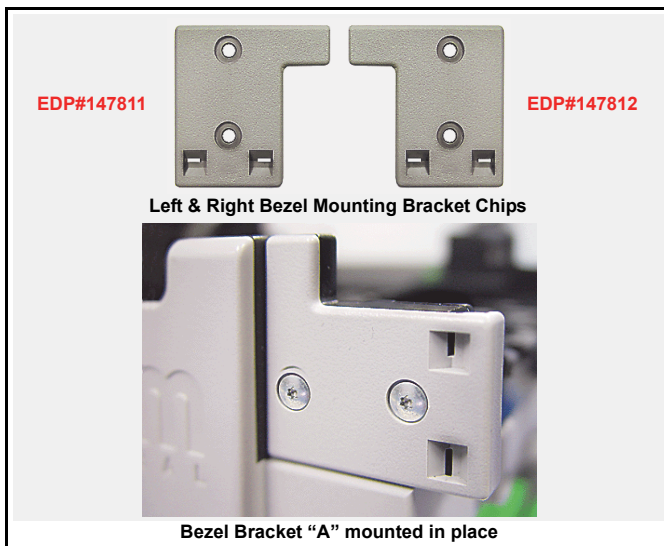


Technical Bulletin 201208

www.jcmglobal.com

The JCM Global Website provides the tools required to service all of our products. This includes a Software information database containing DIP Switch information, Customer Notifications, Product Manuals, Diagnostic Applications and more.

Parts are Parts



Part No. EDP #147811 and 147812

Description: Bezel Mounting Bracket, Left & Right

Usage: The Bezel Mounting Brackets hold the Bezel in place on an iVIZION Banknote Validator. The Bezel Mounting Brackets are designed to flex when excessive pressure is placed on the bracket which allows the Bezel to dislodge. This addition prevents damage to the iVIZION Validator Head and Bezel.

The Bezel Mounting Brackets are secured to the iVIZION Validator Head with two size M2x6 T-6 Torx Screws (EDP Part No.149787). The Screw mounting capability of the Bezel Brackets enhances easy replacement of a Bracket, if required.

Latest JCM Software Listing

UNIT	Country	ID*	Version†	Check Sum	CRC
UBA-10/11-SS	USA	ID-003	V2.08-31	3EA6	0E97
UBA-10/11-SS	USA	ID-024	V2.08-17	19A2	39B7
UBA-14/24-SS/SU	USA	ID-003	V-2.08-23		6B08
UBA-14/24-SS/SU	USA	ID-0G8*	V-2.08-66		31E6
UBA-14-SS & UBA-24-SS/SU	USA	ID-024	V2.08-28		6359
UBA-14-SS & UBA-24-SS/SU	USA	ID-028*	V2.08-18		1866
UBA-25-SS/SU	USA	ID-024*	V2.05-28	2CB2	
UBA-25-SS/SU	USA	ID-028*	V2.06-18	05D6	
iVIZION-SS/SU	USA	ID-003	V-1.70-15		97E6
iVIZION-SS/SU	USA	ID-024	V-1.70-12		0DAD
iVIZION-SS/SU	USA	ID-028	V-1.64-21		4821
UBA-10/11-SS	EUR5	ID-003*	V-2.05-38	7E8E	9527
UBA-10/11-SS	SWE	ID-003*	V-2.05-20	A3E5	95B2
UBA-10/11-SS	ZAF	ID-003	V-2.05-20	E57F	2F46
UBA-10/11/12-SS	BWA	ID-003*	V-1.96-20	D605	3342
UBA-10/11/12-SS	BGR	ID-003*	V-2.06-40	B975	1206
UBA-10/11/12-SS	NAM	ID-003*	V-2.05-20	D12C	A4C1
UBA-10/11/12-SS	TUR	ID-003*	V-2.05-24	557D	C70D
UBA-10/11/12-SS	DNK	ID-003	V-2.08-40	2956	AE34
UBA-10/11/12-SS	DNK+EUR5	ID-003E*	V-2.08-40	E186	8F70
UBA-10/11/12-SS	BIH	ID-003*	V-2.05-20	88F1	D73A
UBA-14-SS & UBA-24-SS/SU	EUR5	ID-003*	V-1.95-20		2BB1
UBA-14-SS & UBA-24-SS/SU	ZAF	ID-003*	V-2.05-20		0653
UBA-14-SS & UBA-24-SS/SU	GBR+SCO	ID-003*	V-2.06-21		6B08

* . an asterisk signifies this ID# does not appear on the JCM Web Site.

† . an "i" suffix indicates Intelligent Cash Box Option compatibility.

The list of JCM Banknote Validator Software provided herein notifies Customers of the latest Software Versions developed. However, the listing does not identify Versions approved by Gaming Jurisdictional Authorities for actual use. Customers should always consult the JCM's Parts Sales Departments concerning approved Versions for use in their specific jurisdictions intended for operation.

Current Service Manual Releases

Product	Revision	Product	Revision
DBV-30X	4	DT-200 BlueWave 2	4
EBA-03	2	iVIZION	3
ICB	3	UBA-RC	A
Taiko (PUB-7/11)	3	TBV	1
TSP-02	D	ICB Service Manual	4
EBA-3X	4	ICB Web Reports Ops Manual	1
UBA 10/11/14/24/25	3a	VEGA-RC	1
iPRO	A*	iPRO-RC	A*

* NOTE: Release updated this Month.

Save Time and Labor with JCM's Latest Intelligent Cash Box System

The ICB® (Intelligent Cash Box) system is a unique cash management system that allows the operator to track a Cash Box and its contents through the entire cash process. The ICB system eliminates the need for dedicating Cash Boxes to specific machines, or putting barcode identification labels on the Cash Boxes. The Cash Boxes are tracked electronically eliminating most variance issues, and with the custom reports provided to each department, accuracy and efficiency is greatly improved.





FREE REGIONAL TRAINING

Give your technicians the tools they need to keep your customers happy and your equipment running at peak efficiency.

For the local and regional training schedule visit:

<http://www.jcmglobal.com>

Technical Bulletin 201208 August 2012

Technical Tips

Question: Is there a way to Bench Test the PayCheck 4 Printer?

Answer: The PayCheck 4 is easily tested with the Nanoptix Printer Status 5.1.0.18 Application available at <http://www.nanoptix.com/techsupport/support.asp>, Download Printer Status Program (Current). The download is an Application, and will install itself on the PC when downloaded.

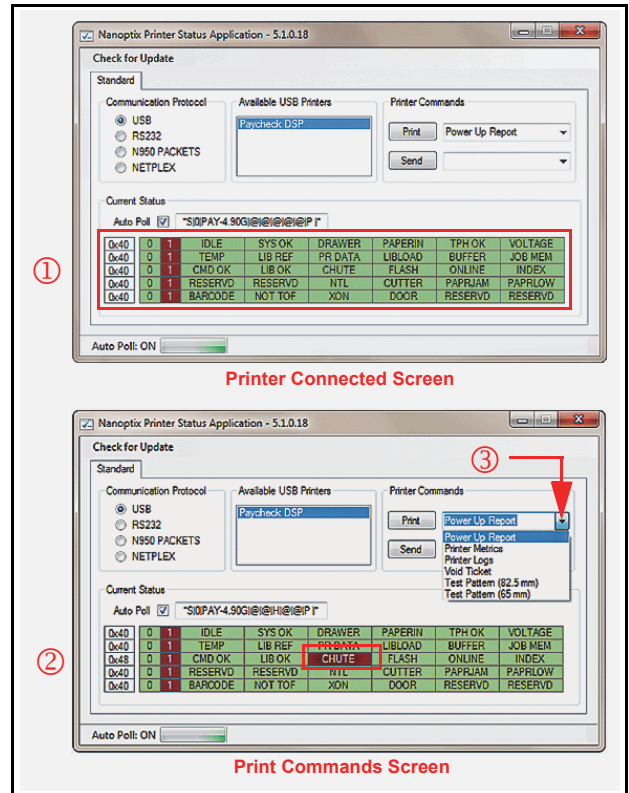
To use the Application, proceed as follows:

1. Open the Nanoptix Printer Status Application then,
2. Connect the PayCheck 4 Printer using either a USB, RS232, N950 Packets or Netplex type connection.
3. Apply Power to the Printer.
4. To Test each Sensor, block or activate the Sensor on the Printer. In the area beneath "Current Status" ①, the box related to each Sensor activated will change from GREEN to RED if working properly ②.

Example:

The Chute, or Ticket Taken Sensor is blocked as indicated by the RED Color of the Chute Box.

5. To Test the Printer's print function, use the drop-down Arrow in the "Printer Commands" area to the right of the "Print" Screen Button ③, and select a Report to print.
6. Evaluate the print quality based on the report selected.



Nanoptix Printer Status Application Screens



JCM TECHNICAL SUPPORT CONTACTS

Headquarters (Japan)

Sales and Service | 81-6-6703-8405 | hq-jp@jcmglobal.com

Europe, Africa, Russia, Middle East

Sales and Service | 49-211-530645-0 | hq-eu@jcmglobal.com

Australia, Oceania

Sales and Service | 61-2 9648 0811 | ipayne@jcmglobal.com

Southeast Asia

Sales and Service | 853 28 72 2648 | asiapactechsupport@jcmglobal.com

North/South America/Canada/Caribbean

Toll Free Product Support | (800) 683-7248 or (702) 651-0000 | techsupport@jcmglobal.com

After Hours America's Support

JCM American prides itself in offering the best Customer Service in the industry. We prove this by offering a 24 hour hotline, where Technical Support Personnel can be reached at any time, 7 days a week. To reach our 24/7 after hour's hotline, just follow these three easy steps:

- 1.) Call JCM American at (800) 683-7248.
- 2.) Select "Option 1" and wait for the call to be transferred to the JCM after hour's Technical Support line.
- 3.) Speak with a certified JCM support technician about your situation.

JCM is a registered trademark of JCM American Corporation. All other product names mentioned herein may be registered trademarks or trademarks of their respective companies. Furthermore, TM and ® are not mentioned in each case in this publication.