

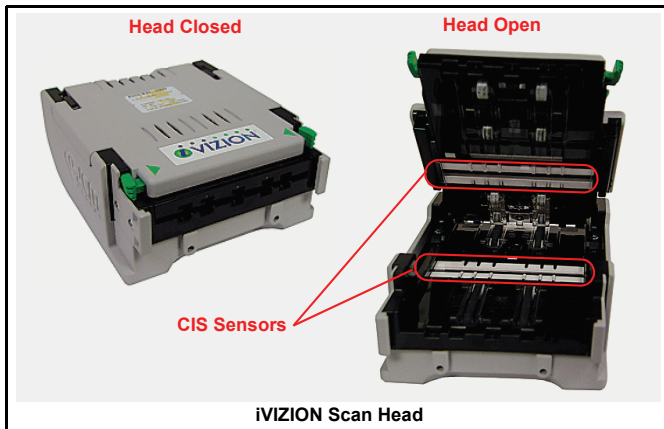


Technical Bulletin 201102

www.jcmglobal.com

The JCM Global Website provides the tools required to service all of our products. This includes a Software information database containing DIP Switch information, Customer Notifications, Product Manuals, Diagnostic Applications and more.

Parts are Parts



Part No. 148069

Description: iVIZION Validation Unit

Usage: The Validation Unit contains two (2) sets of Contact Image Sensors (CIS) used to scan the image of a Banknote or TITO Ticket being identified. The Banknote is scanned for a reflective reading of both sides, as well as a transmissive scan, and the output of two (2) additional UV Sensors. These readings combine for a sampling of over 580,000 points of information that are used to identify the Banknote's validity.

Note: The inner surface of the Transport Trays is made of a poly-carbonate material. To clean the surface, use a dry, Micro-fiber Cloth. For drink spills or other adhering residue, use a mild soap and water solution on a lint-free Cloth and then buff the surface dry with the Micro-fiber Cloth previously used to clean the surfaces.

Latest JCM Software Listing

UNIT	Country	ID*	Version†	Check Sum	CRC
UBA-10/11-SS	USA	ID-003	V2.06-21	028E	
UBA-10/11-SS	USA	ID-024	V2.06-17	7E99	
UBA-14/24-SS/SU	USA	ID-003	V-2.06-21		7BAA
UBA-14/24-SS/SU	USA	ID-0G8*	V-2.06-66		F6&E
UBA-14-SS & UBA-24-SS/SU	USA	ID-024	V2.06-28		EE8D
UBA-14-SS & UBA-24-SS/SU	USA	ID-028*	V2.06-18	AEC9	A6F0
UBA-25-SS/SU	USA	ID-024*	V2.05-28	2CB2	
UBA-25-SS/SU	USA	ID-028*	V2.06-18	05D6	
WBA-12/13-SS	USA	ID-003	V-3.80-32i†	0ABC	
WBA-12/13-SS	USA	ID-044C*	V-3.75-05i†	FE10	
WBA-12/13-SS	USA	ID-044*	V-3.75-05i†	D716	
WBA-12/13-SS	USA	ID-024*	V-3.80-34	D1F3	
UBA-10/11-SS	EUR	ID-003*	V-2.05-24	80DC	
UBA-10/11-SS	SWE	ID-003*	V-2.05-20	A3E5	95B2
UBA-10/11-SS	ZAF	ID-003	V-2.05-20	E57F	2F46
UBA-10/11/12-SS	BWA	ID-003*	V-1.96-20	D605	3342
UBA-10/11/12-SS	BGR	ID-003*	V-2.05-20	DA20	21D1
UBA-10/11/12-SS	EST	ID-003*	V-2.05-20	97B4	52BF
UBA-10/11/12-SS	NAM	ID-003*	V-2.05-20	D12C	A4C1
UBA-10/11/12-SS	TUR	ID-003*	V-1.98-20	D722	584A
UBA-10/11/12-SS	DNK	ID-003	V-2.05-21	4F2B	
UBA-10/11/12-SS	DNK+EUR	ID-003E*	V-2.05-21	D4C7	
UBA-10/11/12-SS	BIH	ID-003*	V-2.05-20	88F1	D73A
UBA-14-SS & UBA-24-SS/SU	EUR5	ID-003*	V-1.95-20		2BB1
UBA-14-SS & UBA-24-SS/SU	ZAF	ID-003*	V-2.05-20	C3AC	0653
UBA-14-SS & UBA-24-SS/SU	GBP+SCO	ID-003*	V-2.05-20	DBC7	8FE5

* . an asterisk signifies this ID# does not appear on the JCM Web Site.

† . an "i" suffix indicates Intelligent Cash Box Option compatibility.

The list of JCM Banknote Validator Software provided herein notifies Customers of the latest Software Versions developed. However, the listing does not identify Versions approved by Gaming Jurisdictional Authorities for actual use. Customers should always consult the JCM's Parts Sales Departments concerning approved Versions for use in their specific jurisdictions intended for operation.

Current Service Manuals

Product	Revision	Product	Revision
DBV-30X	4	TSP-02	B
EBA-03	2	UBA 10/11/14/24/25	3
ICB	3	WBA-1X/2X	1
Tiako (PUB-7/11)	1	iVIZION	A

Save Time and Labor with JCM's Intelligent Cash Box System

The ICB® (Intelligent Cash Box) system is a unique cash management system that allows the operator to track a Cash Box and its contents through the entire cash process. The ICB system eliminates the need for dedicating Cash Boxes to specific machines, or putting barcode identification labels on the Cash Boxes. The Cash Boxes are tracked electronically eliminating most variance issues, and with the custom reports provided to each department, accuracy and efficiency is greatly improved.





FREE REGIONAL TRAINING

Give your technicians the tools they need to keep your customers happy and your equipment running at peak efficiency.

For the local and regional training schedule visit:

<http://www.jcmglobal.com>

Technical Bulletin 201102 February 2011

Technical Tips

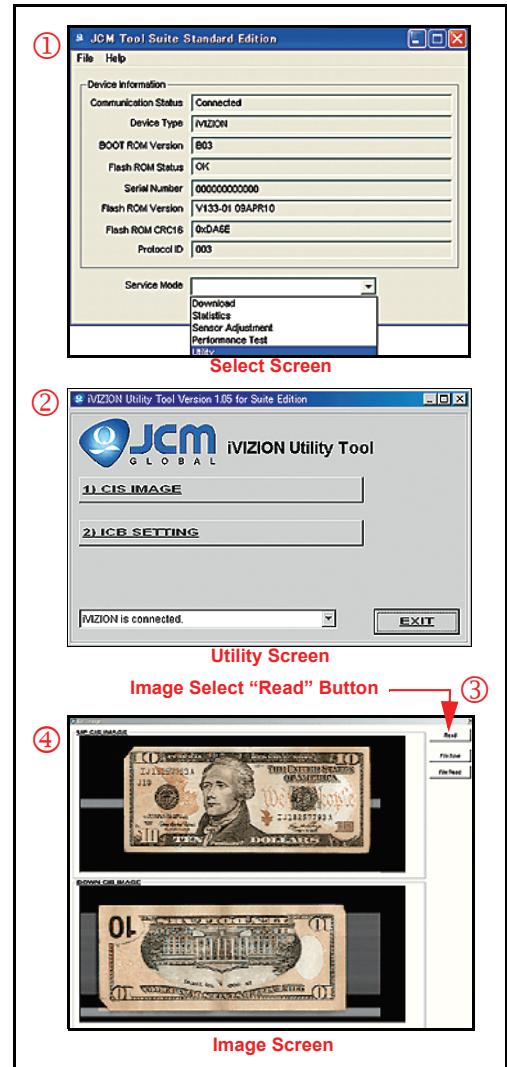
Question: Can I actually get a complete image of the last Banknote inserted into an iVIZION Validator?

Answer: Yes, the iVIZION has the capability to show the last image scanned by the Contact Image Sensors (CIS). Download and install the JCM Tool Suite Standard Edition available on the JCM Global Web Site at: http://www.jcmglobal.com/Libraries/Software_Tools/JCM_Tool_Suite.sflb.ashx.

Connect to the iVIZION Unit using a standard USB-A to USB mini-B Harness. The program will identify the Validator connected and list the Boot ROM Version, Serial Number, Software Version, CRC and Protocol being used ①.

Select the “Utility” Screen ② from the drop-down Menu. From this Screen the last image captured can be viewed, or the ICB functions for the Validator can be set.

Select “1) CIS Image” and Mouse-click on the “Read” Screen Button ③. An image of both sides of the last Banknote inserted will then be displayed ④.



Some JCM Tool Suite Standard Edition Screens



JCM TECHNICAL SUPPORT CONTACTS

Headquarters (Japan)

Sales and Service	81-6-6703-8405	hq-jp@jcmglobal.com
-------------------	----------------	---------------------

Europe, Africa, Russia, Middle East

Sales and Service	49-211-530645-0	hq-eu@jcmglobal.com
-------------------	-----------------	---------------------

Australia, Oceania

Sales and Service	61-2 9648 0811	ipayne@jcmglobal.com
-------------------	----------------	----------------------

Southeast Asia

Sales and Service	853 28 72 2648	jim.teng@jcmglobal.com
-------------------	----------------	------------------------

North/South America/Canada/Caribbean

Toll Free Product Support	(800) 683-7248 or (702) 651-0000	techsupport@jcmglobal.com
---------------------------	----------------------------------	---------------------------

After Hours America's Support

JCM American prides itself in offering the best Customer Service in the industry. We prove this by offering a 24 hour hotline, where Technical Support Personnel can be reached at any time, 7 days a week. To reach our 24/7 after hour's hotline, just follow these three easy steps:
 1.) Call JCM American at (800) 683-7248. 2.) Select "Option 5" and wait for the call to be transferred to the JCM after hour's Technical Support line.
 3.) Speak with a certified JCM support technician about your situation.

JCM is a registered trademark of JCM American Corporation. All other product names mentioned herein may be registered trademarks or trademarks of their respective companies. Furthermore, TM and ® are not mentioned in each case in this publication.