

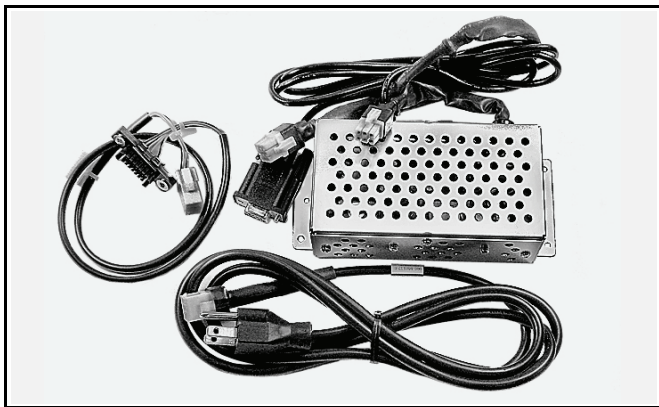


Technical Bulletin 200704

www.jcm-american.com

The JCM web site provides the tools you need, including the software information database with DIP switch information, our photo parts catalog, online ordering form, repair service, and more.

Parts are Parts



New WBA/UBA Power Supply Kit

Part No. 701-000148

Description: WBA X2-X5,W/RS-232, AC Power Supply

Usage: This power supply replaces the PS-15-006 power supply (Part No. 550-100042). The new supply now offers up to 5 amps of current and was designed specifically to power our next generation bill validator product. It is backwards compatible to the current WBA product line however, and can be directly used in place of the older PS-15-006 unit.

Note: This power supply features a built in RS-232 serial data converter board containing a standard DB-9 connector for serial I/O communication. It also has an AC power cord built directly into it. This power supply can be used for all functions on the WBA and UBA with the exception of diagnostics at this time.

JCM Latest Software Listing

UNIT	ID	Version*	Check Sum
UBA-10/11-SS	ID-003	V1.44-12	359E
UBA-10/11-SS	ID-003AS (Aristocrat)	V1.45-12	6AD2
UBA-10/11-SS	ID-024	V1.44-14	C2AA
UBA-10/11-SS	ID-003K (Konami)	V1.44-12	1830
UBA-14-SS	ID-024	V1.44-21	7EF7
WBA-10/11-SS	ID-003	V-3.60-30	F452
WBA-10/11-SS	ID-022/023	V-3.60-03	0D8D
WBA-10/11-SS	ID-024	V-3.60-30	2E22
WBA-12/13-SS	ID-003	V-3.63-30i*	092D
WBA-12/13-SS	ID-0C3	V-3.63-09i*	F37F
WBA-12/13-SS	ID-022/023	V-3.63-03i*	1068
WBA-12/13-SS	ID-044C	V-3.63-05i*	C566
WBA-12/13-SS	ID-044	V-3.63-05i*	6307
WBA-12/13-SS	ID-024	V-3.65-32	FCD5
DBV-200-B0/B1	ID-022/023	V-2.61-04-03	79E0
DBV-200-A2/A3	ID-004/BAR	V-2.61-05	D72C
DBV-200-A2/A3	ID-044P/045P	V-2.61-05	D4A2
DBV-200-A2/A3	ID-011/015	V-2.61-09	A1AB
DBV-200-A2/A3	ID-044/045W	V-2.61-04	9915
DBV-200-A2/A3	ID-044WP/045WP	V-2.61-05	19F7
DBV-200-B4/B5	ID-024	V-2.61-09	4ECB
DBV-200-B4/B5	ID-003	V-2.61-02	9E55

* an "i" suffix indicates Intelligent Cash Box option.

UNIT	ID	Version	Check Sum
TSP-02	033	2.01	C11F
TSP-02	024CE (Caesar's Entertainment)	2.08	0184
TSP-02	024JC (New Jersey Caesar's Entertainment)	2.08	0A9D
TSP-02	024LT (Lottery)	2.08	508E
TSP-02	024NJ (New Jersey)	2.08	0153
TSP-02	024NV (Nevada)	2.08	E356
TSP-02	024NVW (Nevada - WMS)	2.06	4AE8
TSP-02	033CE (Caesar's Entertainment)	2.00	6B31
TSP-02	033IL (Illinois)	2.00	7D8F
TSP-02	033JC (New Jersey Caesar's Entertainment)	2.00	95C5
TSP-02	033NJ (New Jersey)	2.00	6558
TSP-02	033NV (Nevada)	2.03	E3DD
TSP-02	033NY (New York - Lottery)	2.00	8EB8

The list of JCM bill validator software provided herein notifies customers of the latest versions developed. However, the listing does not identify versions approved by gaming jurisdictional authorities for actual use. Customers should consult JCM's Parts Sales departments concerning approved versions for jurisdictions of intended use.

Save Time and Labor with JCM's Intelligent Cash Box System

The ICB® (Intelligent Cash Box) system is a unique cash management system that allows the operator to track a cash box and its contents through the entire cash process. The ICB system eliminates the need for dedicating cash boxes to specific machines, or putting barcode identification labels on the cash boxes. The cash boxes are tracked electronically eliminating most variance issues, and with the custom reports provided to each department, accuracy and efficiency is greatly improved.





FREE REGIONAL TRAINING

Give your technicians the tools they need to keep your customers happy and your equipment running at peak efficiency.

For the local and regional training schedule visit:

http://www.jcm-american.com/support/training_calendar.asp

Technical Bulletin 200704 April 2007

Technical Tips

Question: Is there any way to simulate communications between a Validator and the associated slot machine?

Answer: Host simulators can be obtained free from the JCM web site.

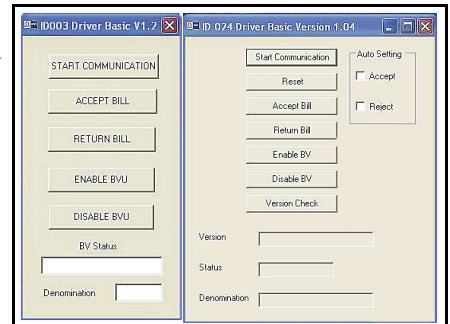
Occasionally a Bill Validator will test perfectly on the bench in self test mode and then not work in the machine. Now the question becomes, where is the communications breakdown? Is the Validator talking to the machine or not?

A way now exists to test Validator communications and insure it is properly talking to the host. The Host simulators offered at the JCM web site are Windows compatible applications that can be used with either a PS 15-006 or the new 5 Watt Power Supply that contains a RS-232 data signal converter and a DB-9 serial communications cable.

To use this simulator proceed as follows:

1. Connect the power supply to the computer and the validator.
2. Set DIP Switches to the same settings that are used in the game and start the host simulator program.
3. Click 'Start Communications' and the 'Enable Validator' buttons in sequence. The validator is now ready for testing.

The Bill Validator's Status Window will now display the communications data existing between the unit and the host.

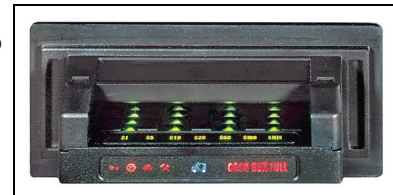


Available Simulator Driver Application Screens

JCM TECHNICAL SUPPORT CONTACTS		
General Product Support:		
Toll Free Product Support	(800) 683-7248	
Product Support Direct	(702) 651-3444	techsupport@jcm-american.com
Parts	(702) 651-3445	parts@jcm-american.com
Training	(800) 683-7248	training@jcm-american.com
Optipay Product Support (DBV 30X, RC-10, A-66)		
Toll Free Product Support	(800) 683-7248	optipaysupport@jcm-american.com
Parts	(702) 651-3445	parts@jcm-american.com
Training	(800) 683-7248	training@jcm-american.com
After Hours Support		
JCM prides itself in offering the best customer service in the industry. We prove this by offering a 24 hour hotline, where technical support personnel can be reached at any time, 7 days a week. To reach our 24/7 after hour's hotline, just follow these three easy steps:		
1. Call JCM American at (800) 683-7248, then		
2. Select option 5 and wait for the call to be transferred to the JCM after hour's Technical Support line.		
3. Speak with a certified JCM support technician about your situation.		
TOVIS TECHNICAL SUPPORT CONTACTS		
Tovis Support Center:		
Product Support - Tovia Service Center	(702) 263-5560 (Mon - Fri, 9am - 5pm)	roy@tovism.com
Parts & Service	(702) 263-5560	roy@tovism.com
TRANSACT TECHNICAL SUPPORT CONTACTS		
Toll Free Product Support	(877) 748-4222	Transact Service Center (877) Epic950 (option 5), Mon - Fri, 8am to 8pm Eastern time, excluding holidays
Product Support Direct	(877) 748-4222	techsupport@transact-tech.com
Parts & Service	(877) 748-4222	techsupport@transact-tech.com

NOW AVAILABLE on select IGT, Bally, WMS, Atronic, Summit & VLC Machines!

Sentry® is a smart bill entry bezel with LED icons displaying the acceptance of up to six denominations plus barcode and last bill entered. There are also five error icons and a cashbox full indicator icon. With an easy machine retrofit, Sentry offers features appealing to both players and operators. Contact your local JCM sales representative for additional information.



JCM is a registered trademark of JCM American Corporation. All other product names mentioned herein may be registered trademarks or trademarks of their respective companies. Furthermore, TM and ® are not mentioned in each case in this publication.